

Product datasheet for **AP52036PU-N**

Repulsive Guidance Molecule C (HFE2) (Center) Rabbit Polyclonal Antibody

Product data:

Product Type:	Primary Antibodies
Applications:	IHC, WB
Recommended Dilution:	ELISA: 1/1000. Western Blot: 1/100-1/500. Immunohistochemistry on Paraffin Sections: 1/50-1/100.
Reactivity:	Human, Mouse
Host:	Rabbit
Isotype:	Ig
Clonality:	Polyclonal
Immunogen:	KLH conjugated synthetic peptide between 141~170 amino acids from the Central region of Human HFE2 / Hemojuvelin
Specificity:	This antibody recognizes Human and Mouse HFE2 / Hemojuvelin (Center).
Formulation:	PBS containing 0.09% (W/V) Sodium Azide as preservative State: Aff - Purified State: Liquid purified Ig fraction
Concentration:	lot specific
Purification:	Protein A column, followed by peptide affinity purification
Conjugation:	Unconjugated
Storage:	Store undiluted at 2-8°C for one month or (in aliquots) at -20°C for longer. Avoid repeated freezing and thawing.
Stability:	Shelf life: one year from despatch.
Gene Name:	hemochromatosis type 2 (juvenile)
Database Link:	Entrez Gene 69585 Mouse Entrez Gene 148738 Human Q6ZVN8
Background:	HFE2 is involved in iron metabolism. It may be a component of the signaling pathway which activates hepcidin or it may act as a modulator of hepcidin expression. It could also represent the cellular receptor for hepcidin.
Synonyms:	HJV, RGMC

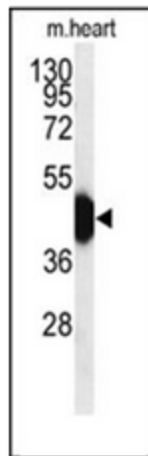


[View online »](#)

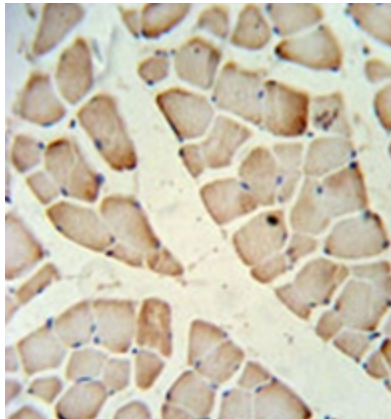
Note: **Molecular Weight:** 45080 Da

Protein Families: Transmembrane

Product images:



Western blot analysis of HFE2 / Hemojuvelin Antibody (Center) in mouse heart tissue lysates (35ug/lane). HFE2 (arrow) was detected using the purified Pab.



Immunohistochemistry analysis in formalin fixed and paraffin embedded skeletal muscle reacted with HFE2 / Hemojuvelin Antibody (Center), which was peroxidase conjugated to the secondary antibody and followed by DAB staining.