

Product datasheet for **AP52034PU-N**

HES7 (N-term) Rabbit Polyclonal Antibody

Product data:

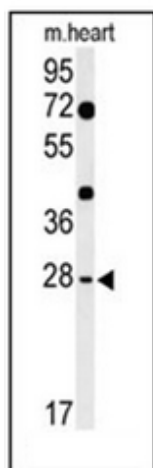
Product Type:	Primary Antibodies
Applications:	WB
Recommended Dilution:	ELISA: 1/1000. Western Blot: 1/100-1/500.
Reactivity:	Human, Mouse
Host:	Rabbit
Isotype:	Ig
Clonality:	Polyclonal
Immunogen:	KLH conjugated synthetic peptide between 33–63 amino acids from the N-terminal region of human HES7
Specificity:	This antibody recognizes Human and Mouse HES7 (N-term).
Formulation:	PBS containing 0.09% (W/V) Sodium Azide as preservative State: Aff - Purified State: Liquid purified Ig fraction
Concentration:	lot specific
Purification:	Protein A column, followed by peptide affinity purification
Conjugation:	Unconjugated
Storage:	Store undiluted at 2-8°C for one month or (in aliquots) at -20°C for longer. Avoid repeated freezing and thawing.
Stability:	Shelf life: one year from despatch.
Gene Name:	hes family bHLH transcription factor 7
Database Link:	Entrez Gene 84667 Human Q9BYE0
Background:	HES7 is a member of the hairy and enhancer of split family of bHLH transcription factors. The protein functions as a transcriptional repressor, and is implicated in correct patterning of the axial skeleton.
Synonyms:	Transcription factor HES-7, bHLH factor Hes7, BHLHB37



[View online »](#)

Note: **Molecular Weight:** 24894 Da

Product images:



Western blot analysis of HES7 Antibody (N-term) in mouse heart tissue lysates (35ug/lane). HES7 (arrow) was detected using the purified Pab.