

Product datasheet for **AP52033PU-N**

HES6 (N-term) Rabbit Polyclonal Antibody

Product data:

Product Type:	Primary Antibodies
Applications:	WB
Recommended Dilution:	ELISA: 1/1000. Western Blot: 1/100-1/500.
Reactivity:	Human
Host:	Rabbit
Isotype:	Ig
Clonality:	Polyclonal
Immunogen:	KLH conjugated synthetic peptide between 13~42 amino acids from the N-terminal region of human HES6
Specificity:	This antibody recognizes Human HES (N-term).
Formulation:	PBS containing 0.09% (W/V) Sodium Azide as preservative State: Aff - Purified State: Liquid purified Ig fraction
Concentration:	lot specific
Purification:	Protein A column, followed by peptide affinity purification
Conjugation:	Unconjugated
Storage:	Store undiluted at 2-8°C for one month or (in aliquots) at -20°C for longer. Avoid repeated freezing and thawing.
Stability:	Shelf life: one year from despatch.
Gene Name:	hes family bHLH transcription factor 6
Database Link:	Entrez Gene 55502 Human Q96HZ4
Background:	HES6 is a member of a subfamily of basic helix-loop-helix transcription repressors that have homology to the Drosophila enhancer of split genes. The protein functions as a cofactor, interacting with other transcription factors through a tetrapeptide domain in its C-terminus.
Synonyms:	Transcription cofactor HES-6, C-HAIRY1, BHLHB41

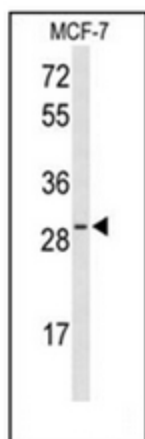


[View online »](#)

Note: **Molecular Weight:** 24129 Da

Protein Families: Druggable Genome, Transcription Factors

Product images:



Western blot analysis of HES6 Antibody (N-term) in MCF-7 cell line lysates (35ug/lane). HES6 (arrow) was detected using the purified Pab.