

Product datasheet for **AP52032PU-N**

HERV-FRD (ERVFRD-1) (N-term) Rabbit Polyclonal Antibody

Product data:

Product Type:	Primary Antibodies
Applications:	WB
Recommended Dilution:	ELISA: 1/1000. Western Blot: 1/100-1/500.
Reactivity:	Human
Host:	Rabbit
Isotype:	Ig
Clonality:	Polyclonal
Immunogen:	KLH conjugated synthetic peptide between 78-107 amino acids from the N-terminal region of Human ERVFRDE1 / HERV-FRD
Specificity:	This antibody recognizes Human ERVFRDE1 / HERV-FRD (N-term).
Formulation:	PBS containing 0.09% (W/V) Sodium Azide as preservative State: Aff - Purified State: Liquid purified Ig fraction
Concentration:	lot specific
Purification:	Protein A column, followed by peptide affinity purification
Conjugation:	Unconjugated
Storage:	Store undiluted at 2-8°C for one month or (in aliquots) at -20°C for longer. Avoid repeated freezing and thawing.
Stability:	Shelf life: one year from despatch.
Gene Name:	endogenous retrovirus group FRD member 1
Database Link:	Entrez Gene 405754 Human P60508
Background:	Human endogenous retroviruses (HERVs) make up approximately 8% of the human genome. Although most HERVs are nonfunctional, the HERV-W (ERVWE1; MIM 604659) and HERV-FRD envelope (env) proteins can induce cell-cell fusion when expressed in cells possessing appropriate receptors (Blaise et al., 2003 [PubMed 14557543]).
Synonyms:	Envelope polyprotein, Syncytin-2

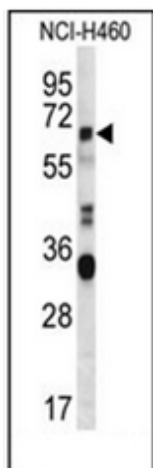


[View online »](#)

Note: **Molecular Weight:** 59523 Da

Protein Families: Transmembrane

Product images:



Western blot analysis of ERVFRDE1 / HERV-FRD Antibody (N-term) in NCI-H460 cell line lysates (35ug/lane). This demonstrates the HERV-FRD antibody detected the HERV-FRD protein (arrow).