

Product datasheet for **AP52031PU-N**

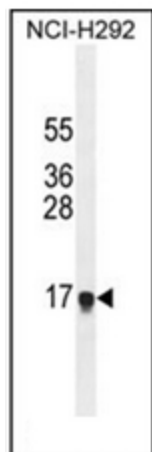
HEPN1 (N-term) Rabbit Polyclonal Antibody

Product data:

Product Type:	Primary Antibodies
Applications:	WB
Recommended Dilution:	ELISA: 1/1000. Western Blot: 1/100-1/500.
Reactivity:	Human
Host:	Rabbit
Isotype:	Ig
Clonality:	Polyclonal
Immunogen:	KLH conjugated synthetic peptide between 9-38 amino acids from the N-terminal region of human HEPN1
Specificity:	This antibody recognizes Human HEPN1 (N-term).
Formulation:	PBS containing 0.09% (W/V) Sodium Azide as preservative State: Aff - Purified State: Liquid purified Ig fraction
Concentration:	lot specific
Purification:	Protein A column, followed by peptide affinity purification
Conjugation:	Unconjugated
Storage:	Store undiluted at 2-8°C for one month or (in aliquots) at -20°C for longer. Avoid repeated freezing and thawing.
Stability:	Shelf life: one year from despatch.
Gene Name:	hepatocellular carcinoma, down-regulated 1
Database Link:	Entrez Gene 641654 Human Q6WQI6
Synonyms:	Putative cancer susceptibility gene protein
Note:	Molecular Weight: 10305 Da



[View online »](#)

Product images:

Western blot analysis of HEPN1 Antibody (N-term) in NCI-H292 cell line lysates (35ug/lane). This demonstrates the HEPN1 antibody detected the HEPN1 protein (arrow).