

Product datasheet for **AP52030PU-N**

HEPACAM (C-term) Rabbit Polyclonal Antibody

Product data:

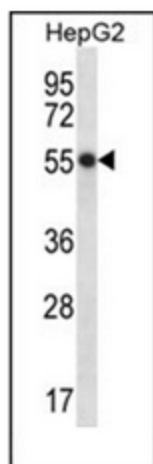
Product Type:	Primary Antibodies
Applications:	WB
Recommended Dilution:	ELISA: 1/1000. Western Blot: 1/100-1/500.
Reactivity:	Human
Host:	Rabbit
Isotype:	Ig
Clonality:	Polyclonal
Immunogen:	KLH conjugated synthetic peptide between 305-335 amino acids from the C-terminal region of human HEPACAM
Specificity:	This antibody recognizes Human HEPACAM (C-term).
Formulation:	PBS containing 0.09% (W/V) Sodium Azide as preservative State: Aff - Purified State: Liquid purified Ig fraction
Concentration:	lot specific
Purification:	Protein A column, followed by peptide affinity purification
Conjugation:	Unconjugated
Storage:	Store undiluted at 2-8°C for one month or (in aliquots) at -20°C for longer. Avoid repeated freezing and thawing.
Stability:	Shelf life: one year from despatch.
Gene Name:	hepatic and glial cell adhesion molecule
Database Link:	Entrez Gene 220296 Human Q14CZ8
Background:	HEPACAM is involved in regulating cell motility and cell-matrix interactions. May inhibit cell growth through suppression of cell proliferation.
Synonyms:	Hepatocyte cell adhesion molecule
Note:	Molecular Weight: 46026 Da



[View online »](#)

Protein Families: Druggable Genome, Transmembrane

Product images:



Western blot analysis of hepaCAM Antibody (C-term) in HepG2 cell line lysates (35ug/lane). This demonstrates the HEPACAM antibody detected the HEPACAM protein (arrow).