

Product datasheet for **AP52027PU-N**

NEDL2 (HECW2) (Center) Rabbit Polyclonal Antibody

Product data:

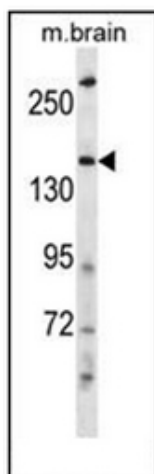
Product Type:	Primary Antibodies
Applications:	WB
Recommended Dilution:	ELISA: 1/1000. Western Blot: 1/100-1/500.
Reactivity:	Human, Mouse
Host:	Rabbit
Isotype:	Ig
Clonality:	Polyclonal
Immunogen:	KLH conjugated synthetic peptide between 847-876 amino acids from the Central region of human HECW2
Specificity:	This antibody recognizes Human and Mouse HECW2 (Center).
Formulation:	PBS containing 0.09% (W/V) Sodium Azide as preservative State: Aff - Purified State: Liquid purified Ig fraction
Concentration:	lot specific
Purification:	Protein A column, followed by peptide affinity purification
Conjugation:	Unconjugated
Storage:	Store undiluted at 2-8°C for one month or (in aliquots) at -20°C for longer. Avoid repeated freezing and thawing.
Stability:	Shelf life: one year from despatch.
Gene Name:	HECT, C2 and WW domain containing E3 ubiquitin protein ligase 2
Database Link:	Entrez Gene 57520 Human Q9P2P5
Background:	E3 ubiquitin-protein ligase that mediates ubiquitination of TP73. Acts to stabilize TP73 and enhance activation of transcription by TP73.
Synonyms:	HECT, HECW2, KIAA1301
Note:	Molecular Weight: 175769 Da



[View online »](#)

Protein Families: Druggable Genome

Product images:



Western blot analysis of HECW2 Antibody (Center) in mouse brain tissue lysates (35ug/lane). This demonstrates the HECW2 antibody detected the HECW2 protein (arrow).