

Product datasheet for **AP52025PU-N**

HDLBP (Center) Rabbit Polyclonal Antibody

Product data:

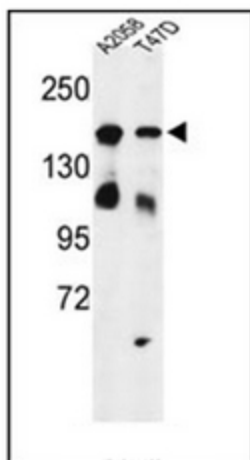
Product Type:	Primary Antibodies
Applications:	IHC, WB
Recommended Dilution:	ELISA: 1/1000. Western Blot: 1/100-1/500. Immunohistochemistry on Paraffin Sections: 1/50-1/100.
Reactivity:	Human
Host:	Rabbit
Isotype:	Ig
Clonality:	Polyclonal
Immunogen:	KLH conjugated synthetic peptide between 770~800 amino acids from the Central region of Human Vigilin / HDLBP
Specificity:	This antibody recognizes Human Vigilin / HDLBP (Center).
Formulation:	PBS containing 0.09% (W/V) Sodium Azide as preservative State: Aff - Purified State: Liquid purified Ig fraction
Concentration:	lot specific
Purification:	Protein A column, followed by peptide affinity purification
Conjugation:	Unconjugated
Storage:	Store undiluted at 2-8°C for one month or (in aliquots) at -20°C for longer. Avoid repeated freezing and thawing.
Stability:	Shelf life: one year from despatch.
Gene Name:	high density lipoprotein binding protein
Database Link:	Entrez Gene 3069 Human Q00341
Background:	High density lipoprotein-binding protein, also known as vigilin, is a 110-kD protein that specifically binds HDL molecules and may function in the removal of excess cellular cholesterol.
Synonyms:	HDL-binding protein



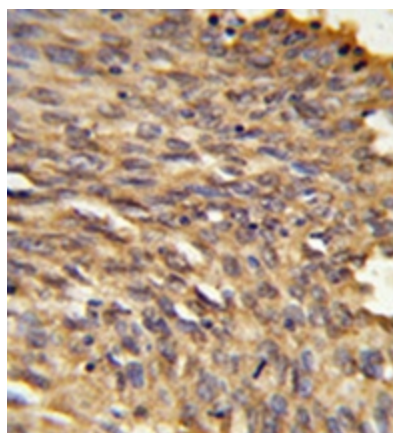
[View online »](#)

Note: **Molecular Weight:** 141456 Da

Product images:



Western blot analysis of Vigilin / HDLBP Antibody (Center) in A2058, T47D cell line lysates (35ug/lane). HDLBP (arrow) was detected using the purified Pab.



Immunohistochemistry in formalin-fixed and paraffin-embedded human lung carcinoma reacted with Vigilin / HDLBP Antibody (Center), which was peroxidase-conjugated to the secondary antibody, followed by DAB staining.