

## Product datasheet for **AP52021PU-N**

### Orexin Receptor 2 (HCRTR2) (Center) Rabbit Polyclonal Antibody

#### Product data:

Product Type:	Primary Antibodies
Applications:	WB
Recommended Dilution:	<b>ELISA:</b> 1/1000. <b>Western Blot:</b> 1/1000.
Reactivity:	Human, Mouse
Host:	Rabbit
Isotype:	Ig
Clonality:	Polyclonal
Immunogen:	KLH conjugated synthetic peptide between 275-304 amino acids from the Central region of Human Orexin receptor type 2
Specificity:	This antibody recognizes Human and Mouse Orexin receptor type 2 (Center).
Formulation:	PBS containing 0.09% (W/V) Sodium Azide as preservative State: Aff - Purified State: Liquid purified Ig fraction
Concentration:	lot specific
Purification:	Protein A column, followed by peptide affinity purification
Conjugation:	Unconjugated
Storage:	Store undiluted at 2-8°C for one month or (in aliquots) at -20°C for longer. Avoid repeated freezing and thawing.
Stability:	Shelf life: one year from despatch.
Gene Name:	hypocretin receptor 2
Database Link:	<a href="#">Entrez Gene 387285 Mouse</a> <a href="#">Entrez Gene 3062 Human</a> <a href="#">O43614</a>
Background:	The protein encoded by this gene is a G-protein coupled receptor involved in the regulation of feeding behavior. The encoded protein binds the hypothalamic neuropeptides orexin A and orexin B. A related gene (HCRTR1) encodes a G-protein coupled receptor that selectively binds orexin A.
Synonyms:	HCRTR2, Ox2r, Hypocretin receptor type 2

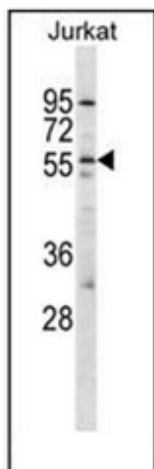


[View online »](#)

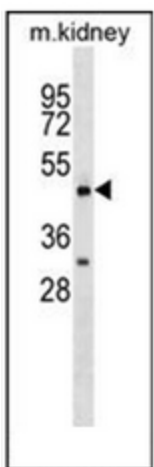
Note: **Molecular Weight:** 50694 Da

Protein Families: Druggable Genome

Protein Pathways: Neuroactive ligand-receptor interaction

**Product images:**

Western blot analysis of Orexin receptor type 2 Antibody (Center) in Jurkat cell line lysates (35ug/lane).



Western blot analysis of Orexin receptor type 2 Antibody (Center) in mouse kidney tissue lysates (35ug/lane).