

Product datasheet for **AP52020PU-N**

Orexin Receptor 1 (HCRTR1) (Center) Rabbit Polyclonal Antibody

Product data:

Product Type:	Primary Antibodies
Applications:	WB
Recommended Dilution:	ELISA: 1/1000. Western Blot: 1/100-1/500.
Reactivity:	Human
Host:	Rabbit
Isotype:	Ig
Clonality:	Polyclonal
Immunogen:	KLH conjugated synthetic peptide between 269-298 amino acids from the Central region of Human Orexin receptor type 1 (Center)
Specificity:	This antibody recognizes Human Orexin receptor type 1 (Center)
Formulation:	PBS containing 0.09% (W/V) Sodium Azide as preservative State: Aff - Purified State: Liquid purified Ig fraction
Concentration:	lot specific
Purification:	Protein A column, followed by peptide affinity purification
Conjugation:	Unconjugated
Storage:	Store undiluted at 2-8°C for one month or (in aliquots) at -20°C for longer. Avoid repeated freezing and thawing.
Stability:	Shelf life: one year from despatch.
Gene Name:	hypocretin receptor 1
Database Link:	Entrez Gene 3061 Human O43613
Background:	The protein encoded by this gene is a G-protein coupled receptor involved in the regulation of feeding behavior. The encoded protein selectively binds the hypothalamic neuropeptide orexin A. A related gene (HCRTR2) encodes a G-protein coupled receptor that binds orexin A and orexin B.
Synonyms:	Hypocretin receptor type 1, HCRTR1, Ox1r



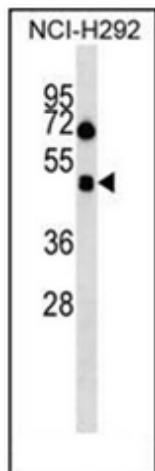
[View online »](#)

Note: **Molecular Weight:** 47536 Da

Protein Families: Druggable Genome, ES Cell Differentiation/IPS, GPCR, Transmembrane

Protein Pathways: Neuroactive ligand-receptor interaction

Product images:



Western blot analysis of Orexin receptor type 1 Antibody (Center) in NCI-H292 cell line lysates (35ug/lane).