

Product datasheet for **AP52019PU-N**

RPEL1 (C-term) Rabbit Polyclonal Antibody

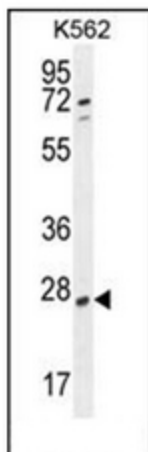
Product data:

Product Type:	Primary Antibodies
Applications:	FC, WB
Recommended Dilution:	ELISA: 1/1000. Western Blot: 1/100-1/500. Flow Cytometry: 1/10-1/50.
Reactivity:	Human, Mouse
Host:	Rabbit
Isotype:	Ig
Clonality:	Polyclonal
Immunogen:	KLH conjugated synthetic peptide between 187-215 amino acids from the C-terminal region of human hCG_2024410
Specificity:	This antibody recognizes Human and Mouse hCG_2024410 (C-term).
Formulation:	PBS containing 0.09% (W/V) Sodium Azide as preservative State: Aff - Purified State: Liquid purified Ig fraction
Concentration:	lot specific
Purification:	Protein A column, followed by peptide affinity purification
Conjugation:	Unconjugated
Storage:	Store undiluted at 2-8°C for one month or (in aliquots) at -20°C for longer. Avoid repeated freezing and thawing.
Stability:	Shelf life: one year from despatch.
Gene Name:	ribulose-5-phosphate-3-epimerase-like 1
Database Link:	Entrez Gene 729020 Human Q2QD12
Synonyms:	CG_2024410
Note:	Molecular Weight: 25;023 Da
Protein Pathways:	Metabolic pathways, Pentose and glucuronate interconversions, Pentose phosphate pathway

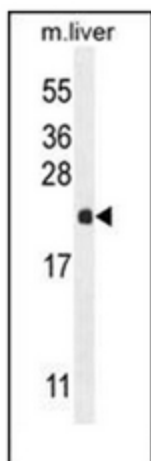


[View online »](#)

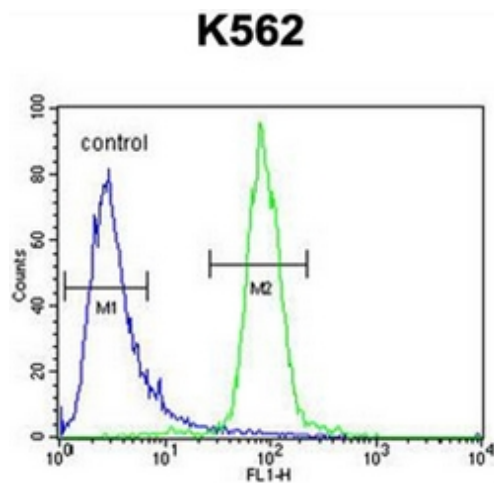
Product images:



Western blot analysis of hCG_2024410 Antibody (C-term) in K562 cell line lysates (35ug/lane). This demonstrates the hCG_2024410 antibody detected the hCG_2024410 protein (arrow).



Western blot analysis of hCG_2024410 Antibody (C-term) in mouse liver tissue lysates (35ug/lane). This demonstrates the CG antibody detected the CG protein (arrow).



Flow cytometric analysis of K562 cells using hCG_2024410 Antibody (C-term) (right histogram) compared to a negative control cell (left histogram). FITC-conjugated goat-anti-rabbit secondary antibodies were used for the analysis.