

Product datasheet for **AP52017PU-N**

CFAP221 (C-term) Rabbit Polyclonal Antibody

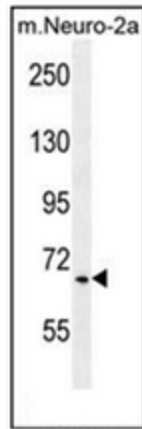
Product data:

Product Type:	Primary Antibodies
Applications:	FC, WB
Recommended Dilution:	ELISA: 1/1000. Western Blot: 1/100-1/500. Flow Cytometry: 1/10-1/50.
Reactivity:	Human, Mouse
Host:	Rabbit
Isotype:	Ig
Clonality:	Polyclonal
Immunogen:	KLH conjugated synthetic peptide between 508-538 amino acids from the C-terminal region of human hCG_17324
Specificity:	This antibody recognizes Human and Mouse hCG_17324 (C-term).
Formulation:	PBS containing 0.09% (W/V) Sodium Azide as preservative State: Aff - Purified State: Liquid purified Ig fraction
Concentration:	lot specific
Purification:	Protein A column, followed by peptide affinity purification
Conjugation:	Unconjugated
Storage:	Store undiluted at 2-8°C for one month or (in aliquots) at -20°C for longer. Avoid repeated freezing and thawing.
Stability:	Shelf life: one year from despatch.
Gene Name:	cilia and flagella associated protein 221
Database Link:	Entrez Gene 200373 Human Q4G0U5
Synonyms:	PCDP1, Primary ciliary dyskinesia protein 1, Cilia- and flagella-associated protein 221
Note:	Molecular Weight: 96891 Da

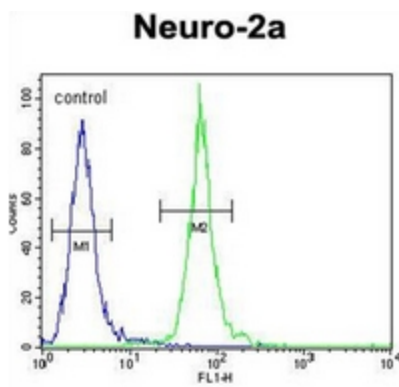


[View online »](#)

Product images:



Western blot analysis of hCG_17324 Antibody (C-term) in mouse Neuro-2a cell line lysates (35ug/lane). This demonstrates the hCG_17324 antibody detected the hCG_17324 protein (arrow).



Flow cytometric analysis of Neuro-2a cells using hCG_17324 Antibody (C-term) (right histogram) compared to a negative control cell (left histogram). FITC-conjugated goat-anti-rabbit secondary antibodies were used for the analysis.