

## Product datasheet for **AP52015PU-N**

### CLDN25 (Center) Rabbit Polyclonal Antibody

#### Product data:

Product Type:	Primary Antibodies
Applications:	WB
Recommended Dilution:	<b>ELISA:</b> 1/1000. <b>Western Blot:</b> 1/100-1/500.
Reactivity:	Human
Host:	Rabbit
Isotype:	Ig
Clonality:	Polyclonal
Immunogen:	KLH conjugated synthetic peptide between 106-136 amino acids from the Central region of human hCG_1646420.
Specificity:	This antibody recognizes Human hCG_1646420 (Center).
Formulation:	PBS containing 0.09% (W/V) Sodium Azide as preservative State: Aff - Purified State: Liquid purified Ig fraction
Concentration:	lot specific
Purification:	Protein A column, followed by peptide affinity purification
Conjugation:	Unconjugated
Storage:	Store undiluted at 2-8°C for one month or (in aliquots) at -20°C for longer. Avoid repeated freezing and thawing.
Stability:	Shelf life: one year from despatch.
Gene Name:	claudin 25
Database Link:	<a href="#">Entrez Gene 644672 Human C9JDP6</a>
Background:	This gene encodes a member of the claudin family. Claudins are integral membrane proteins and components of tight junction strands. Tight junction strands serve as a physical barrier to prevent solutes and water from passing freely through the paracellular space between epithelial or endothelial cell sheets, and also play critical roles in maintaining cell polarity and signal transductions.

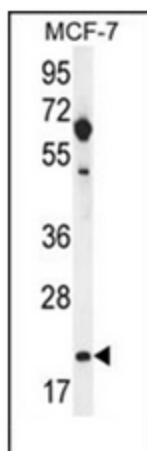


[View online »](#)

Synonyms: CLDN25, Putative claudin-25

Note: **Molecular Weight:** 25394 Da

**Product images:**



Western blot analysis of hCG\_1646420 Antibody (Center) in MCF-7 cell line lysates (35ug/lane). This demonstrates the hCG\_1646420 antibody detected the hCG\_1646420 protein (arrow).