

## Product datasheet for **AP52014PU-N**

### **KBTBD13 (C-term) Rabbit Polyclonal Antibody**

#### **Product data:**

Product Type:	Primary Antibodies
Applications:	IHC, WB
Recommended Dilution:	<b>ELISA:</b> 1/1000. <b>Western Blot:</b> 1/100-1/500. <b>Immunohistochemistry on Paraffin Sections:</b> 1/10-1/50.
Reactivity:	Human
Host:	Rabbit
Isotype:	Ig
Clonality:	Polyclonal
Immunogen:	KLH conjugated synthetic peptide between 416-446 amino acids from the C-terminal region of Human hCG_1645727
Specificity:	This antibody recognizes Human hCG_1645727 (C-term).
Formulation:	PBS containing 0.09% (W/V) Sodium Azide as preservative State: Aff - Purified State: Liquid purified Ig fraction
Concentration:	lot specific
Purification:	Protein A column, followed by peptide affinity purification
Conjugation:	Unconjugated
Storage:	Store undiluted at 2-8°C for one month or (in aliquots) at -20°C for longer. Avoid repeated freezing and thawing.
Stability:	Shelf life: one year from despatch.
Gene Name:	kelch repeat and BTB domain containing 13
Database Link:	<a href="#">Entrez Gene 390594 Human C9JR72</a>



[View online »](#)

**Background:**

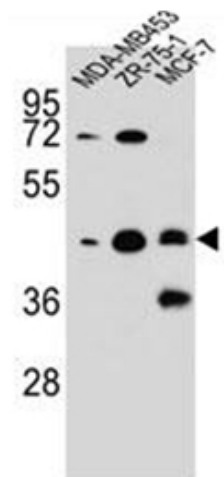
The gene belongs to a family of genes encoding proteins containing a BTB domain and several kelch repeats. The BTB domain functions as a protein-protein interaction module, which includes an ability to self-associate or to interact with non-BTB domain-containing proteins. The kelch motif typically occurs in groups of five to seven repeats, and has been found in proteins with diverse functions. Known functions of these family members include transcription regulation, ion channel tetramerization and gating, protein ubiquitination or degradation, and cytoskeleton regulation. The exact function of this family member has yet to be determined.

**Synonyms:**

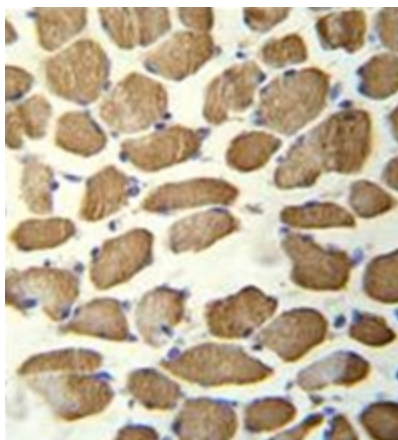
KBTBD13, Kelch repeat and BTB domain-containing protein 13

**Note:**

**Molecular Weight:** 49485 Da

**Product images:**


Western blot analysis of hCG\_1645727 Antibody (C-term) in MDA-MB453, ZR-75-1, MCF-7 cell line lysates (35ug/lane). This demonstrates the hCG\_1645727 antibody detected the hCG\_1645727 protein (arrow).



Immunohistochemistry analysis in formalin fixed and paraffin embedded human skeletal muscle reacted with hCG\_1645727 Antibody (C-term) followed by peroxidase conjugation of the secondary antibody and DAB staining.