

## Product datasheet for **AP52012PU-N**

### Host cell factor C1 regulator 1 (HCFC1R1) (N-term) Rabbit Polyclonal Antibody

#### Product data:

Product Type:	Primary Antibodies
Applications:	IHC, WB
Recommended Dilution:	<b>ELISA:</b> 1/1000. <b>Western Blot:</b> 1/100-1/500. <b>Immunohistochemistry on Paraffin Sections:</b> 1/10-1/50.
Reactivity:	Human
Host:	Rabbit
Isotype:	Ig
Clonality:	Polyclonal
Immunogen:	KLH conjugated synthetic peptide between 1-30 amino acids from the N-terminal region of human HCFC1R1.
Specificity:	This antibody recognizes Human HCFC1R1 / HPIP (N-term).
Formulation:	PBS containing 0.09% (W/V) Sodium Azide as preservative State: Aff - Purified State: Liquid purified Ig fraction
Concentration:	lot specific
Purification:	Protein A column, followed by peptide affinity purification
Conjugation:	Unconjugated
Storage:	Store undiluted at 2-8°C for one month or (in aliquots) at -20°C for longer. Avoid repeated freezing and thawing.
Stability:	Shelf life: one year from despatch.
Gene Name:	host cell factor C1 regulator 1
Database Link:	<a href="#">Entrez Gene 54985 Human Q9NWW0</a>
Background:	Regulates HCFC1 activity by modulating its subcellular localization. Overexpression of HCFC1R1 leads to accumulation of HCFC1 in the cytoplasm. HCFC1R1-mediated export may provide the pool of cytoplasmic HCFC1 required for import of virion-derived VP16 into the nucleus.



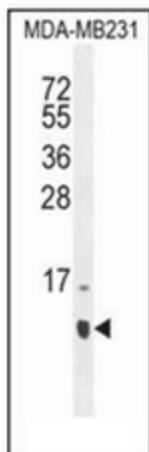
[View online »](#)

**Synonyms:** Host cell factor C1 regulator 1

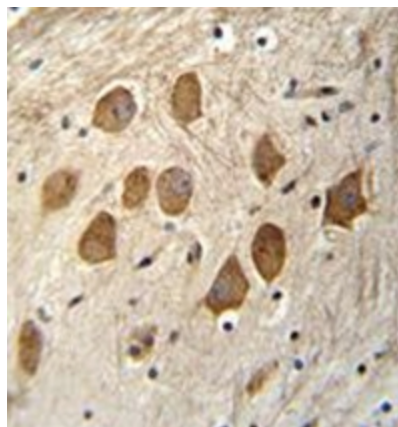
**Note:** **Molecular Weight:** 15291 Da

**Protein Families:** Druggable Genome

**Product images:**



Western blot analysis of HCFC1R1 / HPIP Antibody (N-term) in MDA-MB231 cell line lysates (35ug/lane).



Immunohistochemistry analysis in formalin fixed and paraffin embedded human brain tissue reacted with HCFC1R1 / HPIP Antibody (N-term) followed by peroxidase conjugation of the secondary antibody and DAB staining.