

Product datasheet for **AP52011PU-N**

HCCS (Center) Rabbit Polyclonal Antibody

Product data:

Product Type:	Primary Antibodies
Applications:	IHC, WB
Recommended Dilution:	ELISA: 1/1000. Western Blot: 1/100-1/500. Immunohistochemistry on Paraffin Sections: 1/50-1/100.
Reactivity:	Human, Mouse
Host:	Rabbit
Isotype:	Ig
Clonality:	Polyclonal
Immunogen:	KLH conjugated synthetic peptide between 179~209 amino acids from the Central region of human HCCS / CCHL
Specificity:	This antibody recognizes Human and Mouse HCCS / CCHL (Center).
Formulation:	PBS containing 0.09% (W/V) Sodium Azide as preservative State: Aff - Purified State: Liquid purified Ig fraction
Concentration:	lot specific
Purification:	Protein A column, followed by peptide affinity purification
Conjugation:	Unconjugated
Storage:	Store undiluted at 2-8°C for one month or (in aliquots) at -20°C for longer. Avoid repeated freezing and thawing.
Stability:	Shelf life: one year from despatch.
Gene Name:	holocytochrome c synthase
Database Link:	Entrez Gene 15159 Mouse Entrez Gene 3052 Human P53701
Background:	The protein encoded by this gene is an enzyme that covalently links a heme group to the apoprotein of cytochrome c. Defects in this gene are a cause of microphthalmia syndromic type 7 (MCOPS7). Three transcript variants encoding the same protein have been found for this gene.



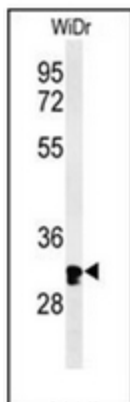
[View online »](#)

Synonyms: CCHL; DKFZp77911858; MCOPS7; OTTHUMP00000022905

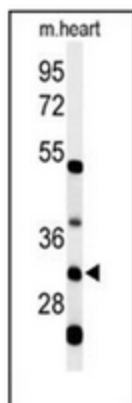
Note: **Molecular Weight:** 30602 Da

Protein Pathways: Porphyrin and chlorophyll metabolism

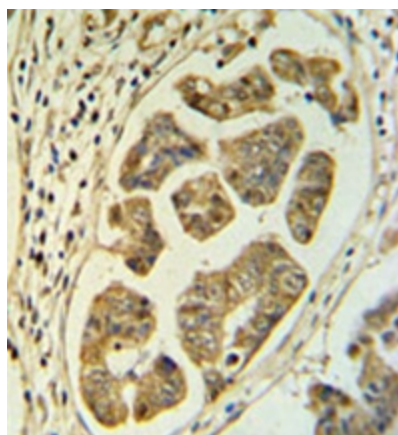
Product images:



Western blot analysis of HCCS / CCHL Antibody (Center) in WiDr cell line lysates (35ug/lane). HCCS (arrow) was detected using the purified Pab.



Western blot analysis of HCCS / CCHL Antibody (Center) in mouse heart tissue lysates (35ug/lane). HCCS (arrow) was detected using the purified Pab.



Immunohistochemistry analysis in formalin fixed and paraffin embedded colon carcinoma reacted with HCCS / CCHL Antibody (Center), which was peroxidase conjugated to the secondary antibody and followed by DAB staining.