

## Product datasheet for **AP52008PU-N**

### HB EGF (HBEGF) (Center) Rabbit Polyclonal Antibody

#### Product data:

Product Type:	Primary Antibodies
Applications:	WB
Recommended Dilution:	<b>ELISA:</b> 1/1000. <b>Western Blot:</b> 1/100-1/500.
Reactivity:	Human
Host:	Rabbit
Isotype:	Ig
Clonality:	Polyclonal
Immunogen:	KLH conjugated synthetic peptide between 67-96 amino acids from the Central region of Human HBEGF
Specificity:	This antibody recognizes Human HBEGF (Center).
Formulation:	PBS containing 0.09% (W/V) Sodium Azide as preservative State: Aff - Purified State: Liquid purified Ig fraction
Concentration:	lot specific
Purification:	Protein A column, followed by peptide affinity purification
Conjugation:	Unconjugated
Storage:	Store undiluted at 2-8°C for one month or (in aliquots) at -20°C for longer. Avoid repeated freezing and thawing.
Stability:	Shelf life: one year from despatch.
Gene Name:	heparin binding EGF like growth factor
Database Link:	<a href="#">Entrez Gene 1839 Human Q99075</a>
Background:	HBEGF may be involved in macrophage-mediated cellular proliferation. It is mitogenic for fibroblasts and smooth muscle but not endothelial cells. It is able to bind EGF receptors with higher affinity than EGF itself and is a far more potent mitogen for smooth muscle cells than EGF. Also acts as a diphtheria toxin receptor.
Synonyms:	DTR, DTS, HEGFL



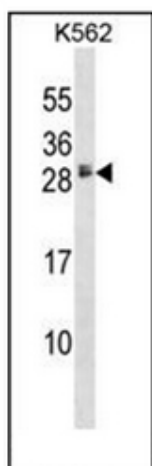
[View online »](#)

**Note:** **Molecular Weight:** 23067 Da

**Protein Families:** Druggable Genome, Secreted Protein, Transmembrane

**Protein Pathways:** Epithelial cell signaling in Helicobacter pylori infection, ErbB signaling pathway, GnRH signaling pathway

### Product images:



Western blot analysis of HBEGF Antibody (Center) in K562 cell line lysates (35ug/lane). This demonstrates the HBEGF antibody detected the HBEGF protein (arrow).