

Product datasheet for **AP52005PU-N**

HAX1 (C-term) Rabbit Polyclonal Antibody

Product data:

Product Type:	Primary Antibodies
Applications:	IHC, WB
Recommended Dilution:	ELISA: 1/1000. Western Blot: 1/100-1/500. Immunohistochemistry on Paraffin Sections: 1/10-1/50.
Reactivity:	Human
Host:	Rabbit
Isotype:	Ig
Clonality:	Polyclonal
Immunogen:	KLH conjugated synthetic peptide between 160-190 amino acids from the C-terminal region of Human HAX1.
Specificity:	This antibody recognizes Human HAX1 (C-term).
Formulation:	PBS containing 0.09% (W/V) Sodium Azide as preservative State: Aff - Purified State: Liquid purified Ig fraction
Concentration:	lot specific
Purification:	Protein A column, followed by peptide affinity purification
Conjugation:	Unconjugated
Storage:	Store undiluted at 2-8°C for one month or (in aliquots) at -20°C for longer. Avoid repeated freezing and thawing.
Stability:	Shelf life: one year from despatch.
Gene Name:	HCLS1 associated protein X-1
Database Link:	Entrez Gene 10456 Human O00165



[View online »](#)

Background:

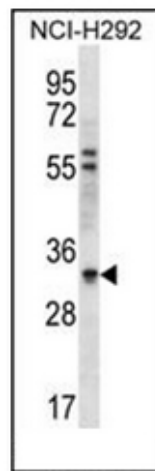
The protein encoded by this gene is known to associate with hematopoietic cell-specific Lyn substrate 1, a substrate of Src family tyrosine kinases. It also interacts with the product of the polycystic kidney disease 2 gene, mutations in which are associated with autosomal-dominant polycystic kidney disease, and with the F-actin-binding protein, cortactin. It was earlier thought that this gene product is mainly localized in the mitochondria, however, recent studies indicate it to be localized in the cell body. Mutations in this gene result in autosomal recessive severe congenital neutropenia, also known as Kostmann disease. Two transcript variants encoding different isoforms have been found for this gene.

Synonyms:

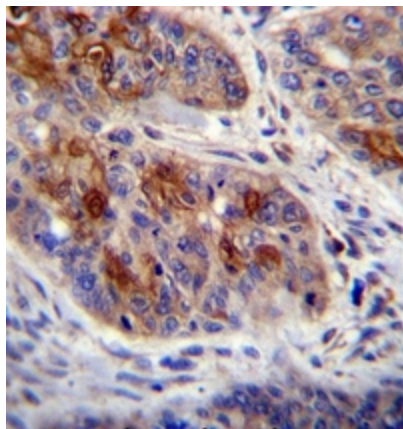
HAX-1, HS1BP1, HCLS1-associated protein X-1, HS1-associating protein X-1, HS1-binding protein 1

Note:

Molecular Weight: 31621 Da

Product images:


Western blot analysis of HAX1 Antibody (C-term) in NCI-H292 cell line lysates (35ug/lane). This demonstrates the HAX1 antibody detected the HAX1 protein (arrow).



Immunohistochemistry analysis in formalin fixed and paraffin embedded human esophageal carcinoma reacted with HAX1 Antibody (C-term) followed by peroxidase conjugation of the secondary antibody and DAB staining.