

Product datasheet for **AP52003PU-N**

HAUS3 (Center) Rabbit Polyclonal Antibody

Product data:

Product Type:	Primary Antibodies
Applications:	IHC, WB
Recommended Dilution:	ELISA: 1/1000. Western Blot: 1/100-1/500. Immunohistochemistry on Paraffin Sections: 1/10-1/50.
Reactivity:	Human
Host:	Rabbit
Isotype:	Ig
Clonality:	Polyclonal
Immunogen:	KLH conjugated synthetic peptide between 379-408 amino acids from the Central region of human HAUS3
Specificity:	This antibody recognizes Human HAUS3 (Center).
Formulation:	PBS containing 0.09% (W/V) Sodium Azide as preservative State: Aff - Purified State: Liquid purified Ig fraction
Concentration:	lot specific
Purification:	Protein A column, followed by peptide affinity purification
Conjugation:	Unconjugated
Storage:	Store undiluted at 2-8°C for one month or (in aliquots) at -20°C for longer. Avoid repeated freezing and thawing.
Stability:	Shelf life: one year from despatch.
Gene Name:	HAUS augmin like complex subunit 3
Database Link:	Entrez Gene 79441 Human Q68CZ6



[View online »](#)

Background:

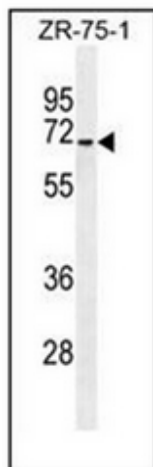
HAUS3 is 1 of 8 subunits of the 390-kD human augmin complex, or HAUS complex. The augmin complex was first identified in *Drosophila*, and its name comes from the Latin verb 'augmentare,' meaning 'to increase.' The augmin complex is a microtubule-binding complex involved in microtubule generation within the mitotic spindle and is vital to mitotic spindle assembly (Goshima et al., 2008 [PubMed 18443220]; Uehara et al., 2009 [PubMed 19369198]).

Synonyms:

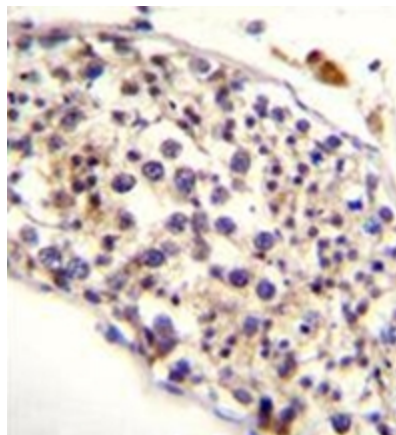
HAUS augmin-like complex subunit 3, C4orf15

Note:

Molecular Weight: 69650 Da

Product images:

Western blot analysis of HAUS3 Antibody (Center) in ZR-75-1 cell line lysates (35ug/lane). This demonstrates the HAUS3 antibody detected the HAUS3 protein (arrow).



Immunohistochemistry analysis in formalin fixed and paraffin embedded human testis tissue reacted with HAUS3 Antibody (Center) followed by peroxidase conjugation of the secondary antibody and DAB staining.