

Product datasheet for **AP52000PU-N**

HAPLN3 (Center) Rabbit Polyclonal Antibody

Product data:

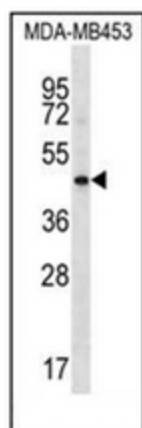
Product Type:	Primary Antibodies
Applications:	WB
Recommended Dilution:	ELISA: 1/1000. Western Blot: 1/100-1/500.
Reactivity:	Human
Host:	Rabbit
Isotype:	Ig
Clonality:	Polyclonal
Immunogen:	KLH conjugated synthetic peptide between 101-130 amino acids from the Central region of human HAPLN3
Specificity:	This antibody recognizes Human HAPLN3 (Center).
Formulation:	PBS containing 0.09% (W/V) Sodium Azide as preservative State: Aff - Purified State: Liquid purified Ig fraction
Concentration:	lot specific
Purification:	Protein A column, followed by peptide affinity purification
Conjugation:	Unconjugated
Storage:	Store undiluted at 2-8°C for one month or (in aliquots) at -20°C for longer. Avoid repeated freezing and thawing.
Stability:	Shelf life: one year from despatch.
Gene Name:	hyaluronan and proteoglycan link protein 3
Database Link:	Entrez Gene 145864 Human Q96S86
Background:	This gene belongs to the hyaluronan and proteoglycan binding link protein gene family. The protein encoded by this gene may function in hyaluronic acid binding and cell adhesion.
Synonyms:	EXLD1; HsT19883
Note:	Molecular Weight: 40894 Da



[View online »](#)

Protein Families: Secreted Protein

Product images:



Western blot analysis of HAPLN3 Antibody (Center) in MDA-MB453 cell line lysates (35ug/lane). This demonstrates the HAPLN3 antibody detected the HAPLN3 protein (arrow).