

Product datasheet for **AP51987PU-N**

beta glucuronidase (GUSB) (C-term) Rabbit Polyclonal Antibody

Product data:

Product Type:	Primary Antibodies
Applications:	IHC, WB
Recommended Dilution:	ELISA: 1/1000. Western Blot: 1/100-1/500. Immunohistochemistry on Paraffin Sections: 1/10-1/50.
Reactivity:	Human
Host:	Rabbit
Isotype:	Ig
Clonality:	Polyclonal
Immunogen:	KLH conjugated synthetic peptide between 514-544 amino acids from the C-terminal region of Human Beta-glucuronidase
Specificity:	This antibody recognizes Human Beta-glucuronidase (C-term).
Formulation:	PBS containing 0.09% (W/V) Sodium Azide as preservative State: Aff - Purified State: Liquid purified Ig fraction
Concentration:	lot specific
Purification:	Protein A column, followed by peptide affinity purification
Conjugation:	Unconjugated
Storage:	Store undiluted at 2-8°C for one month or (in aliquots) at -20°C for longer. Avoid repeated freezing and thawing.
Stability:	Shelf life: one year from despatch.
Gene Name:	glucuronidase beta
Database Link:	Entrez Gene 2990 Human P08236
Background:	GUSB plays an important role in the degradation of dermatan and keratan sulfates.
Synonyms:	GUSB, Beta-G1
Note:	Molecular Weight: 74732 Da

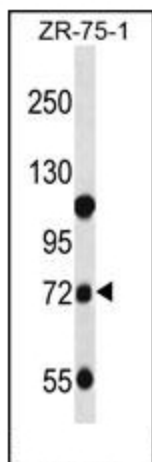


[View online »](#)

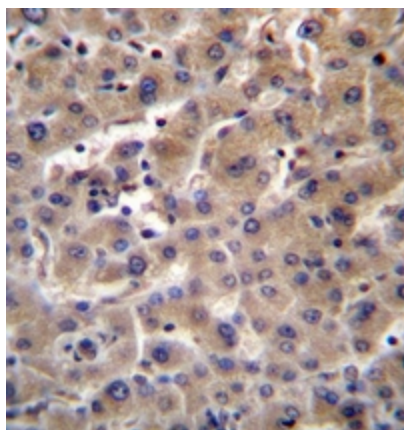
Protein Families: Druggable Genome, Transmembrane

Protein Pathways: Drug metabolism - other enzymes, Glycosaminoglycan degradation, Lysosome, Metabolic pathways, Pentose and glucuronate interconversions, Porphyrin and chlorophyll metabolism, Starch and sucrose metabolism

Product images:



Western blot analysis of Beta-glucuronidase Antibody (C-term) in ZR-75-1 cell line lysates (35ug/lane). This demonstrates the GUSB antibody detected the GUSB protein (arrow).



Immunohistochemistry analysis in formalin fixed and paraffin embedded human liver tissue reacted with Beta-glucuronidase Antibody (C-term) followed by peroxidase conjugation of the secondary antibody and DAB staining.