

Product datasheet for **AP51986PU-N**

beta glucuronidase (GUSB) (Center) Rabbit Polyclonal Antibody

Product data:

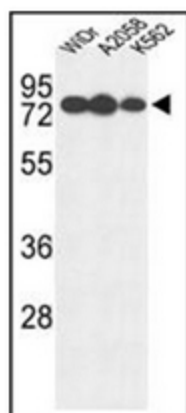
Product Type:	Primary Antibodies
Applications:	FC, IHC, WB
Recommended Dilution:	Western Blot: 1/1000. Flow Cytometry: 1/10-1/50. Immunohistochemistry on Paraffin Sections: 1/50-1/100.
Reactivity:	Human, Porcine
Host:	Rabbit
Isotype:	Ig
Clonality:	Polyclonal
Immunogen:	KLH conjugated synthetic peptide between 335 - 362 amino acids from the Center region of Human Beta-glucuronidase
Specificity:	This antibody recognizes Human Beta-glucuronidase (Center).
Formulation:	PBS containing 0.09% (W/V) Sodium Azide as preservative State: Aff - Purified State: Liquid purified Ig fraction
Concentration:	lot specific
Purification:	Protein A column, followed by peptide affinity purification
Conjugation:	Unconjugated
Storage:	Store undiluted at 2-8°C for one month or (in aliquots) at -20°C for longer. Avoid repeated freezing and thawing.
Stability:	Shelf life: one year from despatch.
Gene Name:	glucuronidase beta
Database Link:	Entrez Gene 2990 Human P08236



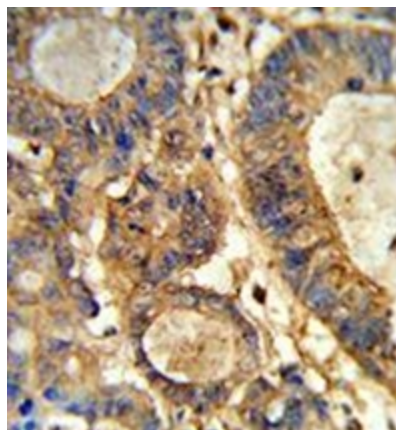
[View online »](#)

- Background:** The GUSB gene encodes beta-glucuronidase (EC 3.2.1.31), a lysosomal hydrolase involved in the stepwise degradation of glucuronic acid-containing glycosaminoglycans (Shiple et al., 1993 [PubMed 7680524]). It is a tetrameric glycoprotein composed of identical subunits (Oshima et al., 1987 [PubMed 3468507]). The GUSB gene is mutated in mucopolysaccharidosis type VII (MPS7; MIM 253220).
- Synonyms:** GUSB, Beta-G1
- Note:** **Molecular Weight:** 74732 Da
- Protein Families:** Druggable Genome, Transmembrane
- Protein Pathways:** Drug metabolism - other enzymes, Glycosaminoglycan degradation, Lysosome, Metabolic pathways, Pentose and glucuronate interconversions, Porphyrin and chlorophyll metabolism, Starch and sucrose metabolism

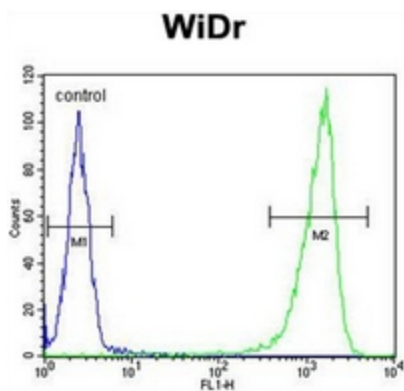
Product images:



Western blot analysis of Beta-glucuronidase Antibody (Center) in WiDr, A2058, K562 cell line lysates (35ug/lane).



Immunohistochemistry analysis in formalin-fixed and paraffin-embedded human colon carcinoma reacted with Beta-glucuronidase Antibody (Center), which was peroxidase-conjugated to the secondary antibody, followed by DAB staining.



Flow cytometric analysis of WiDr cells using Beta-glucuronidase Antibody (Center) (right histogram) compared to a negative control cell (left histogram). FITC-conjugated goat-anti-rabbit secondary antibodies were used for the analysis.