

## Product datasheet for **AP51985PU-N**

### Translation factor GUF1, mitochondrial (GUF1) (N-term) Rabbit Polyclonal Antibody

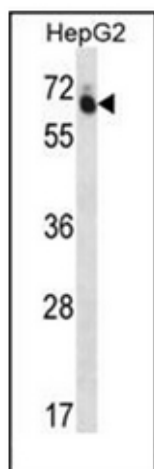
#### Product data:

Product Type:	Primary Antibodies
Applications:	IHC, WB
Recommended Dilution:	<b>ELISA:</b> 1/1000. <b>Western Blot:</b> 1/100-1/500. <b>Immunohistochemistry on Paraffin Sections:</b> 1/10-1/50.
Reactivity:	Human
Host:	Rabbit
Isotype:	Ig
Clonality:	Polyclonal
Immunogen:	KLH conjugated synthetic peptide between 190-220 amino acids from the N-terminal region of human GUF1
Specificity:	This antibody recognizes Human GUF1 (N-term).
Formulation:	PBS containing 0.09% (W/V) Sodium Azide as preservative State: Aff - Purified State: Liquid purified Ig fraction
Concentration:	lot specific
Purification:	Protein A column, followed by peptide affinity purification
Conjugation:	Unconjugated
Storage:	Store undiluted at 2-8°C for one month or (in aliquots) at -20°C for longer. Avoid repeated freezing and thawing.
Stability:	Shelf life: one year from despatch.
Gene Name:	GUF1 homolog, GTPase
Database Link:	<a href="#">Entrez Gene 60558 Human Q8N442</a>
Synonyms:	FLJ13220
Note:	<b>Molecular Weight:</b> 74328 Da

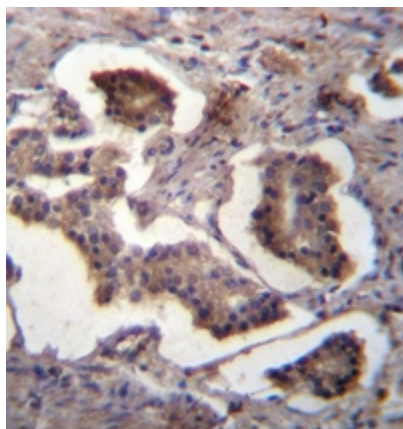


[View online »](#)

## Product images:



Western blot analysis of GUF1 Antibody (N-term) in HepG2 cell line lysates (35ug/lane). This demonstrates the GUF1 antibody detected the GUF1 protein (arrow).



Immunohistochemistry analysis of GUF1 Antibody (N-term) in formalin fixed and paraffin embedded human prostate carcinoma followed by peroxidase conjugation of the secondary antibody and DAB staining.