

## Product datasheet for **AP51984PU-N**

### **GUCY2D (Center) Rabbit Polyclonal Antibody**

#### **Product data:**

Product Type:	Primary Antibodies
Applications:	FC, IHC, WB
Recommended Dilution:	<b>Western Blot:</b> 1/1000. <b>Flow Cytometry:</b> 1/10-1/50. <b>Immunohistochemistry on Paraffin Sections:</b> 1/50-1/100.
Reactivity:	Human
Host:	Rabbit
Isotype:	Ig
Clonality:	Polyclonal
Immunogen:	KLH conjugated synthetic peptide between 540-570 amino acids from the Central region of human GUCY2D / RETGC1
Specificity:	This antibody recognizes Human GUCY2D / RETGC1 (Center).
Formulation:	PBS containing 0.09% (W/V) Sodium Azide as preservative State: Aff - Purified State: Liquid purified Ig fraction
Concentration:	lot specific
Purification:	Protein A column, followed by peptide affinity purification
Conjugation:	Unconjugated
Storage:	Store undiluted at 2-8°C for one month or (in aliquots) at -20°C for longer. Avoid repeated freezing and thawing.
Stability:	Shelf life: one year from despatch.
Gene Name:	guanylate cyclase 2D, retinal
Database Link:	<a href="#">Entrez Gene 3000 Human Q02846</a>



[View online »](#)

**Background:** This gene encodes a retina-specific guanylate cyclase, which is a member of the membrane guanylyl cyclase family. Like other membrane guanylyl cyclases, this enzyme has a hydrophobic amino-terminal signal sequence followed by a large extracellular domain, a single membrane spanning domain, a kinase homology domain, and a guanylyl cyclase catalytic domain. In contrast to other membrane guanylyl cyclases, this enzyme is not activated by natriuretic peptides. Mutations in this gene result in Leber congenital amaurosis and cone-rod dystrophy-6 diseases. [provided by RefSeq].

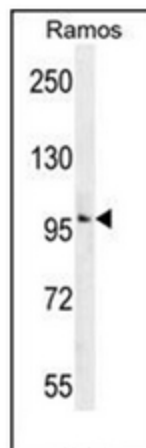
**Synonyms:** Retinal guanylyl cyclase 1, RETGC-1, retinal Guanylate cyclase 2D, CORD6, GUC1A4, GUC2D, RETGC, PGCD

**Note:** **Molecular Weight:** 120059 Da

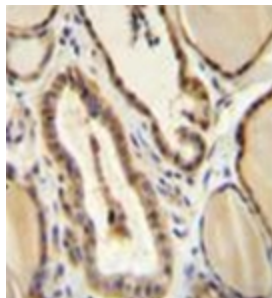
**Protein Families:** Druggable Genome, Protein Kinase, Transmembrane

**Protein Pathways:** Olfactory transduction, Purine metabolism

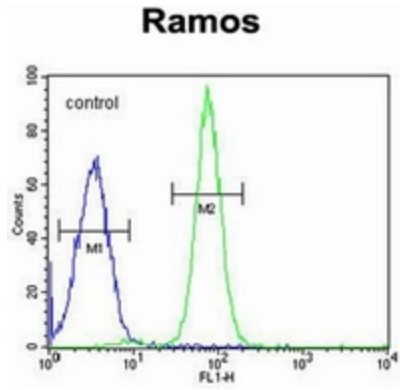
### Product images:



Western blot analysis of GUCY2D / GUCY2D / RETGC1 Antibody (Center).-No in Ramos cell line lysates (35ug/lane).This demonstrates the GUCY2D antibody detected the GUCY2D protein (arrow).



Immunohistochemistry analysis in formalin fixed and paraffin embedded human thyroid tissue reacted with GUCY2D / GUCY2D / RETGC1 Antibody (Center).-No, which was peroxidase conjugated to the secondary antibody and followed by DAB staining.



Flow cytometric analysis of Ramos cells using GUCY2D / GUCY2D / RETGC1 Antibody (Center).- No (right histogram) compared to a negative control cell (left histogram). FITC-conjugated goat-anti-rabbit secondary antibodies were used for the analysis.