

## Product datasheet for **AP51983PU-N**

### Uroguanylin (GUCA2B) (C-term) Rabbit Polyclonal Antibody

#### Product data:

Product Type:	Primary Antibodies
Applications:	WB
Recommended Dilution:	<b>ELISA:</b> 1/1000. <b>Western Blot:</b> 1/100-1/500.
Reactivity:	Human
Host:	Rabbit
Isotype:	Ig
Clonality:	Polyclonal
Immunogen:	KLH conjugated synthetic peptide between 68-97 amino acids from the C-terminal region of human GUCA2B
Specificity:	This antibody recognizes Human GUCA2B (C-term).
Formulation:	PBS containing 0.09% (W/V) Sodium Azide as preservative State: Aff - Purified State: Liquid purified Ig fraction
Concentration:	lot specific
Purification:	Protein A column, followed by peptide affinity purification
Conjugation:	Unconjugated
Storage:	Store undiluted at 2-8°C for one month or (in aliquots) at -20°C for longer. Avoid repeated freezing and thawing.
Stability:	Shelf life: one year from despatch.
Gene Name:	guanylate cyclase activator 2B
Database Link:	<a href="#">Entrez Gene 2981 Human Q16661</a>
Background:	Uroguanylin and guanylin (GUCA2A; MIM 139392), peptide homologs of the bacterial heat-stable enterotoxins (e.g., the E. coli ST toxin; STa), are endogenous activators of the guanylate cyclase-2C receptor (GUCY2C; MIM 601330), which synthesizes cyclic GMP (cGMP), a key component of several intracellular signal transduction pathways.



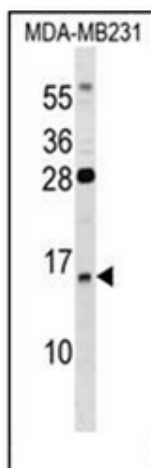
[View online »](#)

**Synonyms:** Guanylate cyclase activator 2B, Guanylate cyclase C-activating peptide 2, GCAP-II, Uroguanylin, UGN

**Note:** **Molecular Weight:** 12069 Da

**Protein Families:** Druggable Genome, Secreted Protein, Transmembrane

**Product images:**



Western blot analysis of GUCA2B Antibody (C-term) in MDA-MB231 cell line lysates (35ug/lane). This demonstrates the GUCA2B antibody detected the GUCA2B protein (arrow).