

## Product datasheet for **AP51982PU-N**

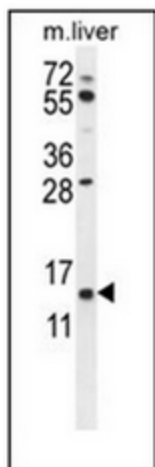
### **GTSF1 (Center) Rabbit Polyclonal Antibody**

#### **Product data:**

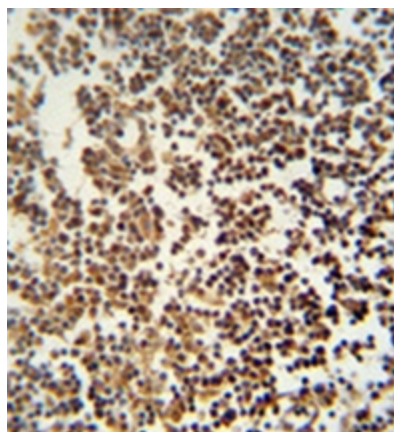
|                       |  |
|-----------------------|--|
| Product Type:         | Primary Antibodies   |
| Applications:         | IHC, WB  |
| Recommended Dilution: | <b>Peptide ELISA:</b> 1/1000.<br><b>Western Blot:</b> 1/1000.<br><b>Immunohistochemistry on Paraffin Sections:</b> 1/50-1/100. |
| Reactivity:           | Human, Mouse   |
| Host:                 | Rabbit   |
| Isotype:              | Ig   |
| Clonality:            | Polyclonal   |
| Immunogen:            | KLH conjugated synthetic peptide between 37-66 amino acids from the Central region of human GTSF1.                             |
| Specificity:          | This antibody recognizes Human and Mouse GTSF1 (Center).   |
| Formulation:          | PBS containing 0.09% (W/V) Sodium Azide as preservative<br>State: Aff - Purified<br>State: Liquid purified Ig fraction         |
| Concentration:        | lot specific   |
| Purification:         | Protein A column, followed by peptide affinity purification  |
| Conjugation:          | Unconjugated   |
| Storage:              | Store undiluted at 2-8°C for one month or (in aliquots) at -20°C for longer.<br>Avoid repeated freezing and thawing.           |
| Stability:            | Shelf life: one year from despatch.  |
| Gene Name:            | gametocyte specific factor 1   |
| Database Link:        | <a href="#">Entrez Gene 121355 Human Q8WW33</a>  |
| Synonyms:             | Gametocyte-specific factor 1,FAM112B   |
| Note:                 | <b>Molecular Weight:</b> 19266 Da  |



[View online »](#)

**Product images:**

Western blot analysis of GTSF1 Antibody (Center) in mouse liver tissue lysates (35ug/lane). This demonstrates the GTSF1 antibody detected the GTSF1 protein (arrow).



Immunohistochemistry analysis in formalin fixed and paraffin embedded human lymph tissue reacted with GTSF1 Antibody (Center) peroxidase conjugated to the secondary antibody and followed by AB staining.