

Product datasheet for **AP51981PU-N**

GTSE1 (C-term) Rabbit Polyclonal Antibody

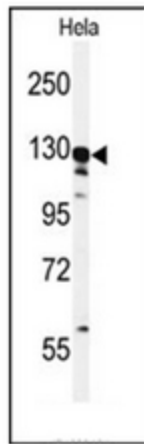
Product data:

Product Type:	Primary Antibodies
Applications:	FC, IHC, WB
Recommended Dilution:	ELISA: 1/1000. Western Blot: 1/100-1/500. Flow Cytometry: 1/10-1/50. Immunohistochemistry on Paraffin Sections: 1/50-1/100.
Reactivity:	Human
Host:	Rabbit
Isotype:	Ig
Clonality:	Polyclonal
Immunogen:	KLH conjugated synthetic peptide between 691~720 amino acids from the C-terminal region of human GTSE1
Specificity:	This antibody recognizes Human GTSE1 (C-term).
Formulation:	PBS containing 0.09% (W/V) Sodium Azide as preservative State: Aff - Purified State: Liquid purified Ig fraction
Concentration:	lot specific
Purification:	Protein A column, followed by peptide affinity purification
Conjugation:	Unconjugated
Storage:	Store undiluted at 2-8°C for one month or (in aliquots) at -20°C for longer. Avoid repeated freezing and thawing.
Stability:	Shelf life: one year from despatch.
Gene Name:	G2 and S-phase expressed 1
Database Link:	Entrez Gene 51512 Human Q9NYZ3

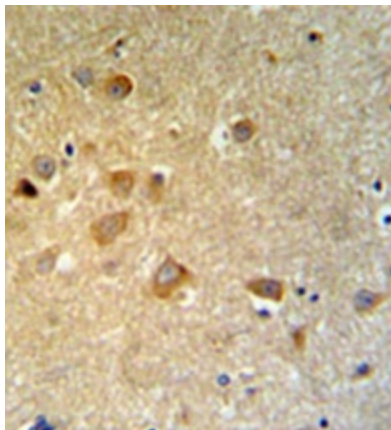


[View online »](#)

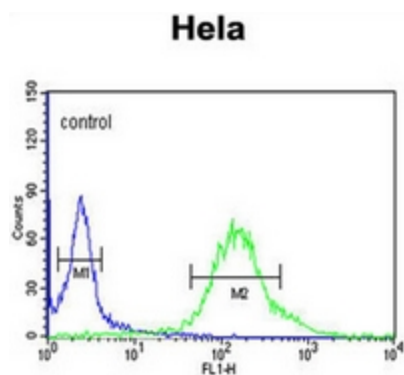
- Background:** GTSE1 is only expressed in the S and G2 phases of the cell cycle, where it colocalizes with cytoplasmic tubulin and microtubules. In response to DNA damage, the encoded protein accumulates in the nucleus and binds the tumor suppressor protein p53, shuttling it out of the nucleus and repressing its ability to induce apoptosis.
- Synonyms:** Protein B99 homolog, GTSE-1
- Note:** **Molecular Weight:** 76615 Da
- Protein Families:** Druggable Genome
- Protein Pathways:** p53 signaling pathway

Product images:

Western blot analysis of GTSE1 Antibody (C-term) in HeLa cell line lysates (35ug/lane). GTSE1 (arrow) was detected using the purified Pab.



Immunohistochemistry analysis in formalin fixed and paraffin embedded brain tissue reacted with GTSE1 Antibody (C-term), which was peroxidase conjugated to the secondary antibody and followed by DAB staining.



Flow cytometric analysis of HeLa cells using GTSE1 Antibody (C-term) (right histogram) compared to a negative control cell (left histogram). FITC-conjugated goat-anti-rabbit secondary antibodies were used for the analysis.