

Product datasheet for **AP51979PU-N**

GTPBP8 (Center) Rabbit Polyclonal Antibody

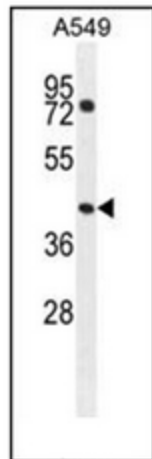
Product data:

Product Type:	Primary Antibodies
Applications:	FC, IHC, WB
Recommended Dilution:	ELISA: 1/1000. Western Blot: 1/100-1/500. Flow Cytometry: 1/10-1/50. Immunohistochemistry on Paraffin Sections: 1/50-1/100.
Reactivity:	Human
Host:	Rabbit
Isotype:	Ig
Clonality:	Polyclonal
Immunogen:	KLH conjugated synthetic peptide between 129-158 amino acids from the Central region of human GTPBP8
Specificity:	This antibody recognizes Human GTPBP8 (Center).
Formulation:	PBS containing 0.09% (W/V) Sodium Azide as preservative State: Aff - Purified State: Liquid purified Ig fraction
Concentration:	lot specific
Purification:	Protein A column, followed by peptide affinity purification
Conjugation:	Unconjugated
Storage:	Store undiluted at 2-8°C for one month or (in aliquots) at -20°C for longer. Avoid repeated freezing and thawing.
Stability:	Shelf life: one year from despatch.
Gene Name:	GTP binding protein 8 (putative)
Database Link:	Entrez Gene 29083 Human Q8N3Z3
Synonyms:	GTP-binding protein 8
Note:	Molecular Weight: 32147 Da

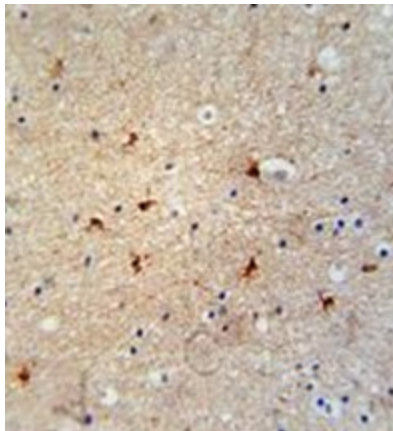


[View online »](#)

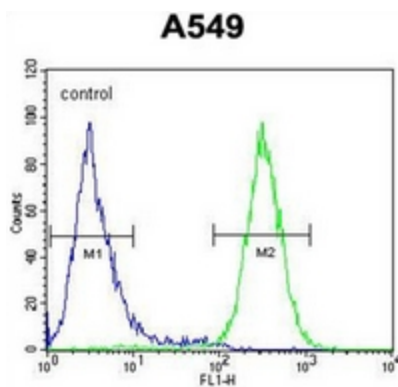
Product images:



Western blot analysis of GTPBP8 Antibody (Center) in A549 cell line lysates (35ug/lane). This demonstrates the GTPBP8 antibody detected the GTPBP8 protein (arrow).



Immunohistochemistry analysis in formalin fixed and paraffin embedded human brain tissue reacted with GTPBP8 Antibody (Center), which was peroxidase conjugated to the secondary antibody and followed by DAB staining.



Flow cytometric analysis of A549 cells using GTPBP8 Antibody (Center) (right histogram) compared to a negative control cell (left histogram). FITC-conjugated goat-anti-rabbit secondary antibodies were used for the analysis.