

## Product datasheet for **AP51977PU-N**

### GTPBP10 (C-term) Rabbit Polyclonal Antibody

#### Product data:

Product Type:	Primary Antibodies
Applications:	WB
Recommended Dilution:	<b>ELISA:</b> 1/1000. <b>Western Blot:</b> 1/100-1/500.
Reactivity:	Human, Mouse
Host:	Rabbit
Isotype:	Ig
Clonality:	Polyclonal
Immunogen:	KLH conjugated synthetic peptide between 250-279 amino acids from the C-terminal region of human GTPBP10
Specificity:	This antibody recognizes Human and Mouse GTPBP10 (C-term).
Formulation:	PBS containing 0.09% (W/V) Sodium Azide as preservative State: Aff - Purified State: Liquid purified Ig fraction
Concentration:	lot specific
Purification:	Protein A column, followed by peptide affinity purification
Conjugation:	Unconjugated
Storage:	Store undiluted at 2-8°C for one month or (in aliquots) at -20°C for longer. Avoid repeated freezing and thawing.
Stability:	Shelf life: one year from despatch.
Gene Name:	GTP binding protein 10
Database Link:	<a href="#">Entrez Gene 85865 Human A4D1E9</a>
Background:	Small G proteins, such as GTPBP10, act as molecular switches that play crucial roles in the regulation of fundamental cellular processes such as protein synthesis, nuclear transport, membrane trafficking, and signal transduction (Hirano et al., 2006 [PubMed 17054726]).
Synonyms:	OBGH2, UG0751c10, GTP-binding protein 10, Protein obg homolog 2



[View online »](#)

Note: **Molecular Weight:** 42933 Da

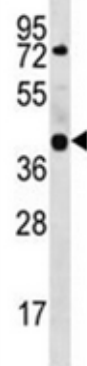
## Product images:

m.kidney



Western blot analysis of GTPBP10 Antibody (C-term) in mouse kidney tissue lysates (35ug/lane). This demonstrates the GTPBP10 antibody detected the GTPBP10 protein (arrow).

NCI-H292



Western blot analysis of GTPBP10 Antibody (C-term) in NCI-H292 cell line lysates (35ug/lane). This demonstrates the GTPBP10 antibody detected the GTPBP10 protein (arrow).