

Product datasheet for **AP51975PU-N**

GTF3C5 (Center) Rabbit Polyclonal Antibody

Product data:

Product Type:	Primary Antibodies
Applications:	WB
Recommended Dilution:	ELISA: 1/1000. Western Blot: 1/100-1/500.
Reactivity:	Human
Host:	Rabbit
Isotype:	Ig
Clonality:	Polyclonal
Immunogen:	KLH conjugated synthetic peptide between 286-316 amino acids from the Central region of human GTF3C5
Specificity:	This antibody recognizes Human GTF3C5 (Center).
Formulation:	PBS containing 0.09% (W/V) Sodium Azide as preservative State: Aff - Purified State: Liquid purified Ig fraction
Concentration:	lot specific
Purification:	Protein A column, followed by peptide affinity purification
Conjugation:	Unconjugated
Storage:	Store undiluted at 2-8°C for one month or (in aliquots) at -20°C for longer. Avoid repeated freezing and thawing.
Stability:	Shelf life: one year from despatch.
Gene Name:	general transcription factor IIIC subunit 5
Database Link:	Entrez Gene 9328 Human Q9Y5Q8
Background:	GTF3C5 is involved in RNA polymerase III-mediated transcription. Integral, tightly associated component of the DNA-binding TFIIC2 subcomplex that directly binds tRNA and virus-associated RNA promoters.
Synonyms:	Transcription factor IIIC subunit epsilon, TF3C-epsilon, TFIIC 63 kDa subunit, TFIIC63

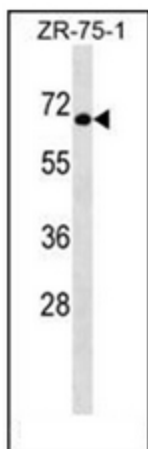


[View online »](#)

Note: **Molecular Weight:** 59571 Da

Protein Families: Transcription Factors

Product images:



Western blot analysis of GTF3C5 Antibody (Center) in ZR-75-1 cell line lysates (35ug/lane). This demonstrates the GTF3C5 antibody detected the GTF3C5 protein (arrow).