

Product datasheet for **AP51974PU-N**

GTF3C2 (N-term) Rabbit Polyclonal Antibody

Product data:

Product Type:	Primary Antibodies
Applications:	WB
Recommended Dilution:	ELISA: 1/1000. Western Blot: 1/100-1/500.
Reactivity:	Human
Host:	Rabbit
Isotype:	Ig
Clonality:	Polyclonal
Immunogen:	KLH conjugated synthetic peptide between 140-170 amino acids from the N-terminal region of Human GTF3C2 / TFIIC110
Specificity:	This antibody recognizes Human GTF3C2 / TFIIC110 (N-term).
Formulation:	PBS containing 0.09% (W/V) Sodium Azide as preservative State: Aff - Purified State: Liquid purified Ig fraction
Concentration:	lot specific
Purification:	Protein A column, followed by peptide affinity purification
Conjugation:	Unconjugated
Storage:	Store undiluted at 2-8°C for one month or (in aliquots) at -20°C for longer. Avoid repeated freezing and thawing.
Stability:	Shelf life: one year from despatch.
Gene Name:	general transcription factor IIIC subunit 2
Database Link:	Entrez Gene 2976 Human Q8WUA4
Background:	GTF3C2 is required for RNA polymerase III-mediated transcription. Component of TFIIC that initiates transcription complex assembly on tRNA and is required for transcription of 5S rRNA and other stable nuclear and cytoplasmic RNAs. May play a direct role in stabilizing interactions of TFIIC2 with TFIIC1.
Synonyms:	TF3C-beta, KIAA0011

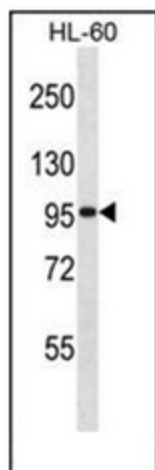


[View online »](#)

Note: **Molecular Weight:** 100680 Da

Protein Families: Transcription Factors

Product images:



Western blot analysis of GTF3C2 / TFIIIC110 Antibody (N-term) in HL-60 cell line lysates (35ug/lane). This demonstrates the GTF3C2 antibody detected the GTF3C2 protein (arrow).