

Product datasheet for **AP51972PU-N**

GTF2H2C (C-term) Rabbit Polyclonal Antibody

Product data:

Product Type:	Primary Antibodies
Applications:	IF, IHC, WB
Recommended Dilution:	ELISA: 1/1000. Western Blot: 1/1000. Immunofluorescence: 1/10-1/50. Immunohistochemistry on Paraffin Sections: 1/10-1/50.
Reactivity:	Human
Host:	Rabbit
Isotype:	Ig
Clonality:	Polyclonal
Immunogen:	KLH conjugated synthetic peptide between 314-343 amino acids from the C-terminal region of human GTF2H2C
Specificity:	This antibody recognizes Human GTF2H2C (C-term).
Formulation:	PBS containing 0.09% (W/V) Sodium Azide as preservative State: Aff - Purified State: Liquid purified Ig fraction
Concentration:	lot specific
Purification:	Protein A column, followed by peptide affinity purification
Conjugation:	Unconjugated
Storage:	Store undiluted at 2-8°C for one month or (in aliquots) at -20°C for longer. Avoid repeated freezing and thawing.
Stability:	Shelf life: one year from despatch.
Gene Name:	GTF2H2 family member C
Database Link:	Entrez Gene 730394 Human Entrez Gene 728340 Human Q6P1K8
Background:	Component of the core-TFIID basal transcription factor involved in nucleotide excision repair (NER) of DNA and, when complexed to CAK, in RNA transcription by RNA polymerase II (By similarity).



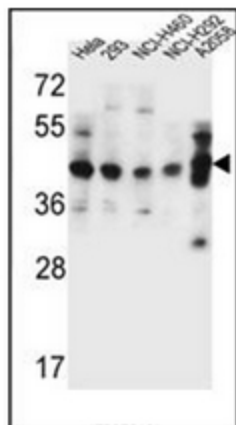
[View online »](#)

Synonyms: GTF2H2D

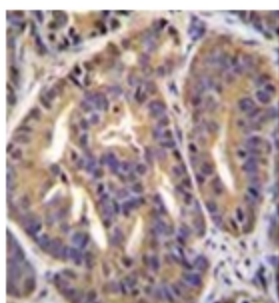
Note: **Molecular Weight:** 44452 Da

Protein Families: Druggable Genome

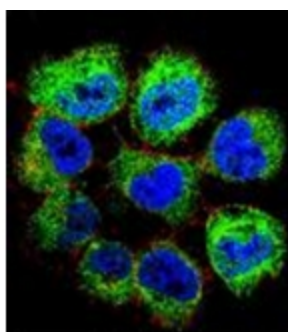
Product images:



Western blot analysis of GTF2H2C Antibody (C-term) in HeLa, 293, NCI-H460, NCI-H292, A2058 cell line lysates (35ug/lane). This demonstrates the GTF2H2C antibody detected the GTF2H2C protein (arrow).



Immunohistochemistry analysis in formalin fixed and paraffin embedded human prostate carcinoma reacted with GTF2H2C Antibody (C-term) followed by peroxidase conjugation of the secondary antibody and DAB staining.



Confocal immunofluorescent analysis of GTF2H2C Antibody (C-term) with NCI-H460 cell followed by Alexa Fluor 488-conjugated goat anti-rabbit IgG (green). Actin filaments have been labeled with Alexa Fluor 555 phalloidin (red). DAPI was used to stain the cell nuclear (blue).