

Product datasheet for **AP51963PU-N**

Glutathione Reductase (GSR) (C-term) Rabbit Polyclonal Antibody

Product data:

Product Type:	Primary Antibodies
Applications:	FC, IF, IHC, WB
Recommended Dilution:	ELISA: 1/1000. Western Blot: 1/100-1/500. Flow Cytometry: 1/10-1/50. Immunofluorescence: 1/10-1/50. Immunohistochemistry on Paraffin Sections: 1/10-1/50.
Reactivity:	Human
Host:	Rabbit
Isotype:	Ig
Clonality:	Polyclonal
Immunogen:	KLH conjugated synthetic peptide between 387-416 amino acids from the C-terminal region of human Glutathione reductase.
Specificity:	This antibody recognizes Human Glutathione reductase (C-term).
Formulation:	PBS containing 0.09% (W/V) Sodium Azide as preservative State: Aff - Purified State: Liquid purified Ig fraction
Concentration:	lot specific
Purification:	Protein A column, followed by peptide affinity purification
Conjugation:	Unconjugated
Storage:	Store undiluted at 2-8°C for one month or (in aliquots) at -20°C for longer. Avoid repeated freezing and thawing.
Stability:	Shelf life: one year from despatch.
Gene Name:	glutathione reductase
Database Link:	Entrez Gene 2936 Human P00390



[View online »](#)

Background: This gene encodes a member of the class-I pyridine nucleotide-disulfide oxidoreductase family. This enzyme is a homodimeric flavoprotein. It is a central enzyme of cellular antioxidant defense, and reduces oxidized glutathione disulfide (GSSG) to the sulfhydryl form GSH, which is an important cellular antioxidant. Rare mutations in this gene result in hereditary glutathione reductase deficiency. Multiple alternatively spliced transcript variants encoding different isoforms have been found.

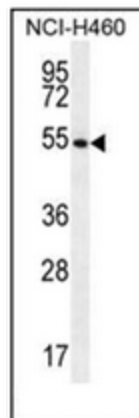
Synonyms: GRase, GR, GSR, GLUR, GRD1

Note: **Molecular Weight:** 56257 Da

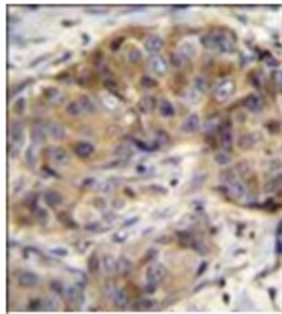
Protein Families: Druggable Genome

Protein Pathways: Glutathione metabolism

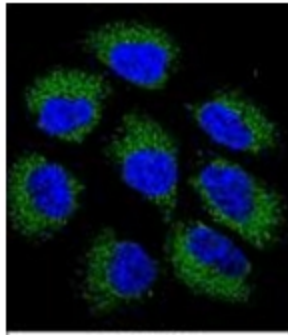
Product images:



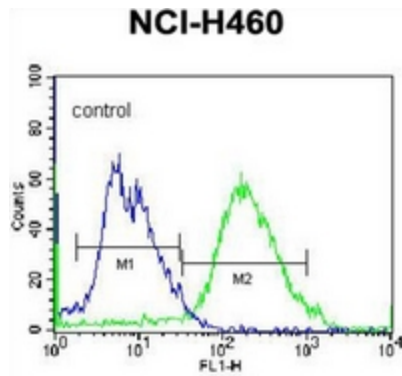
Western blot analysis of Glutathione reductase Antibody (C-term) in NCI-H460 cell line lysates (35ug/lane).



Immunohistochemistry analysis in formalin fixed and paraffin embedded human breast carcinoma reacted with Glutathione reductase Antibody (C-term) followed by peroxidase conjugation of the secondary antibody and DAB staining.



Confocal immunofluorescent analysis of Glutathione reductase Antibody (C-term) with NCI-H460 cell followed by Alexa Fluor 488-conjugated goat anti-rabbit IgG (green). DAPI was used to stain the cell nuclear (blue).



Flow cytometric analysis of NCI-H460 cells using Glutathione reductase Antibody (C-term) (right histogram) compared to a negative control cell (left histogram). FITC-conjugated donkey-anti-rabbit secondary antibodies were used for the analysis.