

Product datasheet for **AP51961PU-N**

GSDMC (Center) Rabbit Polyclonal Antibody

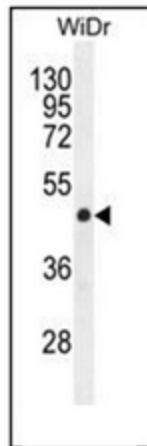
Product data:

Product Type:	Primary Antibodies
Applications:	FC, IHC, WB
Recommended Dilution:	ELISA: 1/1000. Western Blot: 1/100-1/500. Flow Cytometry: 1/10-1/50. Immunohistochemistry on Paraffin Sections: 1/50-1/100.
Reactivity:	Human
Host:	Rabbit
Isotype:	Ig
Clonality:	Polyclonal
Immunogen:	KLH conjugated synthetic peptide between 221-250 amino acids from the Central region of Human Gasdermin C.
Specificity:	This antibody recognizes Human Gasdermin-C (Center).
Formulation:	PBS containing 0.09% (W/V) Sodium Azide as preservative State: Aff - Purified State: Liquid purified Ig fraction
Concentration:	lot specific
Purification:	Protein A column, followed by peptide affinity purification
Conjugation:	Unconjugated
Storage:	Store undiluted at 2-8°C for one month or (in aliquots) at -20°C for longer. Avoid repeated freezing and thawing.
Stability:	Shelf life: one year from despatch.
Gene Name:	gasdermin C
Database Link:	Entrez Gene 56169 Human Q9BYG8
Synonyms:	GSDMC, MLZE, Gasdermin-C
Note:	Molecular Weight: 57692 Da

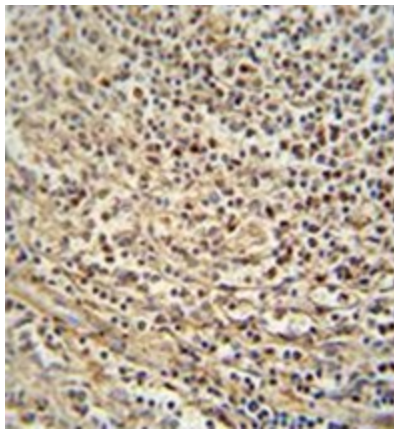


[View online »](#)

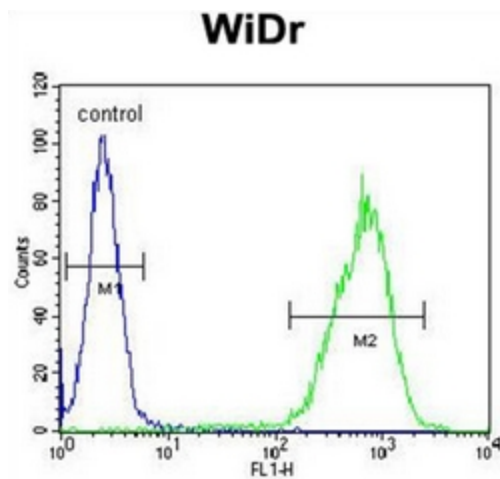
Product images:



Western blot analysis of Gasdermin C Antibody (Center) in WiDr cell line lysates (35ug/lane). This demonstrates the GSDMC antibody detected the GSDMC protein (arrow).



Immunohistochemistry analysis in formalin fixed and paraffin embedded human spleen tissue reacted with Gasdermin C Antibody (Center) followed by peroxidase conjugation of the secondary antibody and DAB staining.



Flow cytometric analysis of WiDr cells using Gasdermin C Antibody (Center) (right histogram) compared to a negative control cell (left histogram).FITC-conjugated goat-anti-rabbit secondary antibodies were used for the analysis.