

## Product datasheet for **AP51960PU-N**

### GRXCR1 (Center) Rabbit Polyclonal Antibody

#### Product data:

Product Type:	Primary Antibodies
Applications:	WB
Recommended Dilution:	<b>ELISA:</b> 1/1000. <b>Western Blot:</b> 1/100-1/500.
Reactivity:	Human, Mouse
Host:	Rabbit
Isotype:	Ig
Clonality:	Polyclonal
Immunogen:	KLH conjugated synthetic peptide between 90-120 amino acids from the Central region of Human GRXCR1
Specificity:	This antibody recognizes Human and Mouse GRXCR1 (Center).
Formulation:	PBS containing 0.09% (W/V) Sodium Azide as preservative State: Aff - Purified State: Liquid purified Ig fraction
Concentration:	lot specific
Purification:	Protein A column, followed by peptide affinity purification
Conjugation:	Unconjugated
Storage:	Store undiluted at 2-8°C for one month or (in aliquots) at -20°C for longer. Avoid repeated freezing and thawing.
Stability:	Shelf life: one year from despatch.
Gene Name:	glutaredoxin and cysteine rich domain containing 1
Database Link:	<a href="#">Entrez Gene 389207 Human A8MXD5</a>
Background:	This gene is one of 60 loci associated with autosomal-recessive nonsyndromic hearing impairment. This gene encodes a protein which contains GRX-like domains; these domains play a role in the S-glutathionylation of proteins and may be involved in actin organization in hair cells.
Synonyms:	Glutaredoxin domain-containing cysteine-rich protein 1,DFNB25

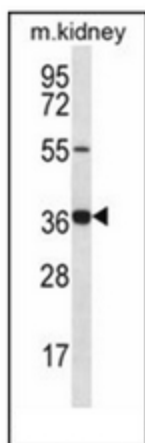


[View online »](#)

**Note:** **Molecular Weight:** 32294 Da

**Protein Families:** Druggable Genome

### Product images:



Western blot analysis of GRXCR1 Antibody (Center) in mouse kidney tissue lysates (35ug/lane). This demonstrates the GRXCR1 antibody detected the GRXCR1 protein (arrow).