

Product datasheet for **AP51959PU-N**

GRPR (Center) Rabbit Polyclonal Antibody

Product data:

Product Type:	Primary Antibodies
Applications:	ELISA, IHC, WB
Recommended Dilution:	ELISA: 1/1000. Western Blot: 1/100-1/500. Immunohistochemistry on Paraffin Sections: 1/50-1/100.
Reactivity:	Human
Host:	Rabbit
Isotype:	Ig
Clonality:	Polyclonal
Immunogen:	KLH conjugated synthetic peptide between 123~152 amino acids from the Central region of Human Gastrin-releasing peptide receptor
Specificity:	This antibody recognizes Human Gastrin-releasing peptide receptor (Center).
Formulation:	PBS containing 0.09% (W/V) Sodium Azide as preservative State: Aff - Purified State: Liquid purified Ig fraction
Concentration:	lot specific
Purification:	Protein A column, followed by peptide affinity purification
Conjugation:	Unconjugated
Storage:	Store undiluted at 2-8°C for one month or (in aliquots) at -20°C for longer. Avoid repeated freezing and thawing.
Stability:	Shelf life: one year from despatch.
Gene Name:	gastrin releasing peptide receptor
Database Link:	Entrez Gene 2925 Human P30550



[View online »](#)

Background:

Gastrin-releasing peptide (GRP) regulates numerous functions of the gastrointestinal and central nervous systems, including release of gastrointestinal hormones, smooth muscle cell contraction, and epithelial cell proliferation and is a potent mitogen for neoplastic tissues. The effects of GRP are mediated through the gastrin-releasing peptide receptor. This receptor is a glycosylated, 7-transmembrane G-protein coupled receptor that activates the phospholipase C signaling pathway. The receptor is aberrantly expressed in numerous cancers such as those of the lung, colon, and prostate. An individual with autism and multiple exostoses was found to have a balanced translocation between chromosome 8 and a chromosome X breakpoint located within the gastrin-releasing peptide receptor gene.

Synonyms:

GRP-R, GRPR, GRP-preferring bombesin receptor

Note:

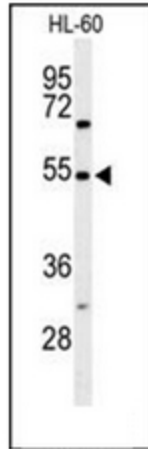
Molecular Weight: 43199 Da

Protein Families:

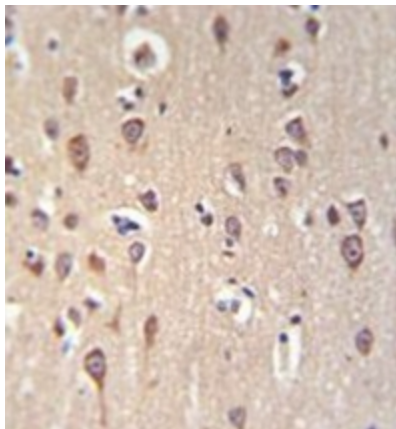
Druggable Genome, GPCR, Transmembrane

Protein Pathways:

Calcium signaling pathway, Neuroactive ligand-receptor interaction

Product images:

Western blot analysis of GRPR Antibody (Center) in HL-60 cell line lysates (35ug/lane). GRPR (arrow) was detected using the purified Pab.



Immunohistochemistry analysis in formalin fixed and paraffin embedded brain tissue reacted with GRPR Antibody (Center) followed by peroxidase conjugation of the secondary antibody and DAB staining.