

Product datasheet for **AP51958PU-N**

GRIP2 (Center) Rabbit Polyclonal Antibody

Product data:

Product Type:	Primary Antibodies
Applications:	IHC, WB
Recommended Dilution:	ELISA: 1/1000. Western Blot: 1/100-1/500. Immunohistochemistry on Paraffin Sections: 1/10-1/50.
Reactivity:	Human
Host:	Rabbit
Isotype:	Ig
Clonality:	Polyclonal
Immunogen:	KLH conjugated synthetic peptide between 717-747 amino acids from the Central region of human GRIP2.
Specificity:	This antibody recognizes Human GRIP2 (Center).
Formulation:	PBS containing 0.09% (W/V) Sodium Azide as preservative State: Aff - Purified State: Liquid purified Ig fraction
Concentration:	lot specific
Purification:	Protein A column, followed by peptide affinity purification
Conjugation:	Unconjugated
Storage:	Store undiluted at 2-8°C for one month or (in aliquots) at -20°C for longer. Avoid repeated freezing and thawing.
Stability:	Shelf life: one year from despatch.
Gene Name:	glutamate receptor interacting protein 2
Database Link:	Entrez Gene 80852 Human Q9C0E4
Background:	GRIP2 may play a role as a localized scaffold for the assembly of a multiprotein signaling complex and as mediator of the trafficking of its binding partners at specific subcellular location in neurons (By similarity).
Synonyms:	KIAA1719

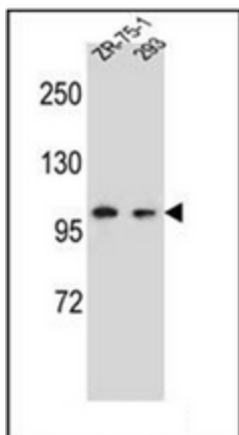


[View online »](#)

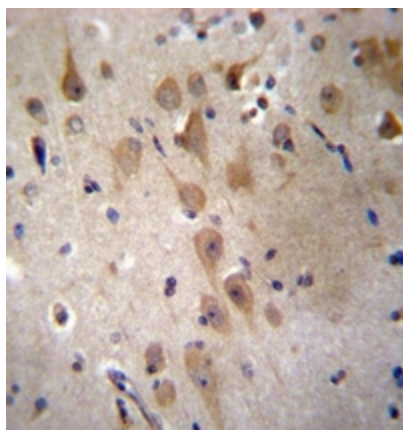
Note: **Molecular Weight:** 112501 Da

Protein Families: Druggable Genome

Product images:



Western blot analysis of GRIP2 Antibody (Center) in ZR-75-1, 293 cell line lysates (35ug/lane). This demonstrates the GRIP2 antibody detected the GRIP2 protein (arrow).



Immunohistochemistry analysis in formalin fixed and paraffin embedded human brain tissue reacted with GRIP2 Antibody (Center) followed by peroxidase conjugation of the secondary antibody and DAB staining.T