

Product datasheet for **AP51957PU-N**

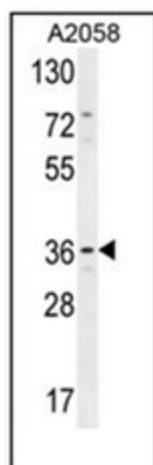
GRINA (Center) Rabbit Polyclonal Antibody

Product data:

Product Type:	Primary Antibodies
Applications:	WB
Recommended Dilution:	ELISA: 1/1000. Western Blot: 1/100-1/500.
Reactivity:	Human
Host:	Rabbit
Isotype:	Ig
Clonality:	Polyclonal
Immunogen:	conjugated synthetic peptide between 124-154 amino acids from the Central region of Human Protein lifeguard 1
Specificity:	This antibody recognizes Human Protein lifeguard 1 (Center).
Formulation:	PBS containing 0.09% (W/V) Sodium Azide as preservative State: Aff - Purified State: Liquid purified Ig fraction
Concentration:	lot specific
Purification:	Protein A column, followed by peptide affinity purification
Conjugation:	Unconjugated
Storage:	Store undiluted at 2-8°C for one month or (in aliquots) at -20°C for longer. Avoid repeated freezing and thawing.
Stability:	Shelf life: one year from despatch.
Gene Name:	glutamate ionotropic receptor NMDA type subunit associated protein 1
Database Link:	Entrez Gene 2907 Human Q7Z429
Synonyms:	GRINA, LFG1, NMDARA1, TMBIM3
Note:	Molecular Weight: 41203 Da
Protein Families:	Druggable Genome, Transmembrane



[View online »](#)

Product images:

Western blot analysis of Protein lifeguard 1 Antibody (Center) in A2058 cell line lysates (35ug/lane).