

## Product datasheet for **AP51956PU-N**

### **NR3B (GRIN3B) (C-term) Rabbit Polyclonal Antibody**

#### Product data:

Product Type:	Primary Antibodies
Applications:	IHC, WB
Recommended Dilution:	<b>ELISA:</b> 1/1000. <b>Western Blot:</b> 1/100-1/500. <b>Immunohistochemistry on Paraffin Sections:</b> 1/10-1/50.
Reactivity:	Human
Host:	Rabbit
Isotype:	Ig
Clonality:	Polyclonal
Immunogen:	KLH conjugated synthetic peptide between 903-933 amino acids from the C-terminal region of human GRIN3B
Specificity:	This antibody recognizes Human GRIN3B (C-term).
Formulation:	PBS containing 0.09% (W/V) Sodium Azide as preservative State: Aff - Purified State: Liquid purified Ig fraction
Concentration:	lot specific
Purification:	Protein A column, followed by peptide affinity purification
Conjugation:	Unconjugated
Storage:	Store undiluted at 2-8°C for one month or (in aliquots) at -20°C for longer. Avoid repeated freezing and thawing.
Stability:	Shelf life: one year from despatch.
Gene Name:	glutamate ionotropic receptor NMDA type subunit 3B
Database Link:	<a href="#">Entrez Gene 116444 Human O60391</a>
Background:	GRIN3B is a NMDA receptor subtype of glutamate-gated ion channels with reduced single-channel conductance, low calcium permeability and low voltage-dependent sensitivity to magnesium. It is mediated by glycine.
Synonyms:	NMDAR3B, NR3B



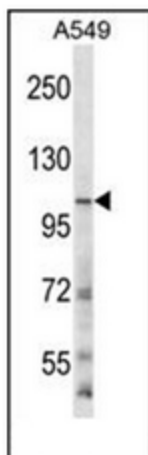
[View online »](#)

**Note:** **Molecular Weight:** 112992 Da

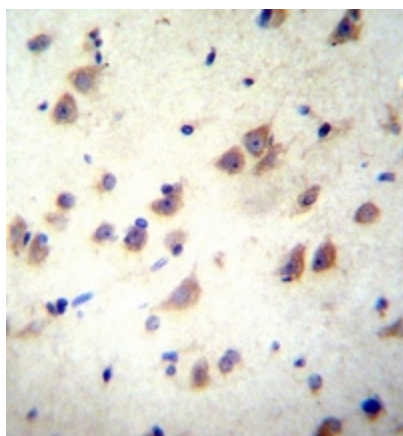
**Protein Families:** Druggable Genome, Ion Channels: Glutamate Receptors, Transmembrane

**Protein Pathways:** Neuroactive ligand-receptor interaction

**Product images:**



Western blot analysis of GRIN3B Antibody (C-term) in A549 cell line lysates (35ug/lane). This demonstrates the GRIN3B antibody detected the GRIN3B protein (arrow).



Immunohistochemistry analysis in formalin fixed and paraffin embedded human brain tissue reacted with GRIN3B Antibody (C-term) followed by peroxidase conjugation of the secondary antibody and DAB staining.