

Product datasheet for **AP51950PU-N**

GRIA4 (Center) Rabbit Polyclonal Antibody

Product data:

Product Type:	Primary Antibodies
Applications:	IHC, WB
Recommended Dilution:	ELISA: 1/1000. Western Blot: 1/100-1/500. Immunohistochemistry on Paraffin Sections: 1/50-1/100.
Reactivity:	Human, Mouse
Host:	Rabbit
Isotype:	Ig
Clonality:	Polyclonal
Immunogen:	KLH conjugated synthetic peptide between 262-291 amino acids from the Central region of Human Glutamate receptor 4 / GLUR4.
Specificity:	This antibody recognizes Human and Mouse Glutamate receptor 4 / GLUR4 (Center).
Formulation:	PBS containing 0.09% (W/V) Sodium Azide as preservative State: Aff - Purified State: Liquid purified Ig fraction
Concentration:	lot specific
Purification:	Protein A column, followed by peptide affinity purification
Conjugation:	Unconjugated
Storage:	Store undiluted at 2-8°C for one month or (in aliquots) at -20°C for longer. Avoid repeated freezing and thawing.
Stability:	Shelf life: one year from despatch.
Gene Name:	glutamate ionotropic receptor AMPA type subunit 4
Database Link:	Entrez Gene 14802 Mouse Entrez Gene 2893 Human P48058



[View online »](#)

Background:

Glutamate receptors are the predominant excitatory neurotransmitter receptors in the mammalian brain and are activated in a variety of normal neurophysiologic processes. These receptors are heteromeric protein complexes composed of multiple subunits, arranged to form ligand-gated ion channels. The classification of glutamate receptors is based on their activation by different pharmacologic agonists. The subunit encoded by this gene belongs to a family of AMPA (alpha-amino-3-hydroxy-5-methyl-4-isoxazole propionate)-sensitive glutamate receptors, and is subject to RNA editing (AGA->GGA; R->G). Alternative splicing of this gene results in transcript variants encoding different isoforms, which may vary in their signal transduction properties. Some haplotypes of this gene show a positive association with schizophrenia. [provided by RefSeq].

Synonyms:

GluR-4, GRIA4, GluR-D, GluA4, Glutamate receptor ionotropic AMPA4

Note:

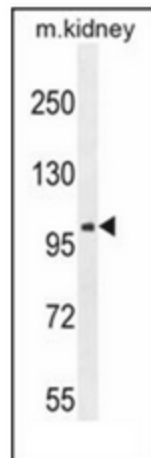
Molecular Weight: 100871 Da

Protein Families:

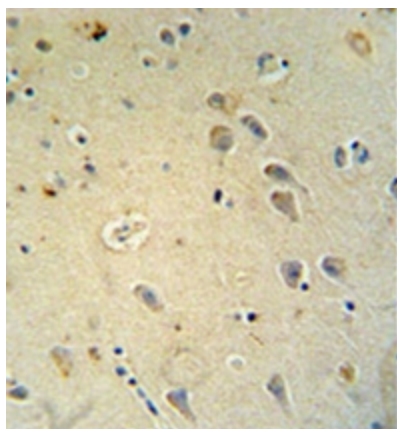
Druggable Genome, Ion Channels: Glutamate Receptors, Transmembrane

Protein Pathways:

Neuroactive ligand-receptor interaction

Product images:

Western blot analysis of Glutamate receptor 4 / GLUR4 Antibody (Center) in mouse kidney tissue lysates (35ug/lane).



Immunohistochemistry analysis in formalin fixed and paraffin embedded human brain tissue reacted with Glutamate receptor 4 / GLUR4 Antibody (Center) followed by peroxidase conjugation of the secondary antibody and DAB staining.