

Product datasheet for **AP51949PU-N**

GRHL3 (N-term) Rabbit Polyclonal Antibody

Product data:

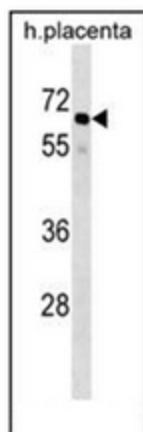
Product Type:	Primary Antibodies
Applications:	WB
Recommended Dilution:	ELISA: 1/1000. Western Blot: 1/100-1/500.
Reactivity:	Human
Host:	Rabbit
Isotype:	Ig
Clonality:	Polyclonal
Immunogen:	KLH conjugated synthetic peptide between 1-30 amino acids from the N-terminal region of human GRHL3 / SOM
Specificity:	This antibody recognizes Human GRHL3 / SOM (N-term).
Formulation:	PBS containing 0.09% (W/V) Sodium Azide as preservative State: Aff - Purified State: Liquid purified Ig fraction
Concentration:	lot specific
Purification:	Protein A column, followed by peptide affinity purification
Conjugation:	Unconjugated
Storage:	Store undiluted at 2-8°C for one month or (in aliquots) at -20°C for longer. Avoid repeated freezing and thawing.
Stability:	Shelf life: one year from despatch.
Gene Name:	grainyhead like transcription factor 3
Database Link:	Entrez Gene 57822 Human Q8TE85
Background:	This gene encodes a member of the grainyhead family of transcription factors. The encoded protein may function as a transcription factor during development, and has been shown to stimulate migration of endothelial cells. Multiple transcript variants encoding distinct isoforms have been identified for this gene.
Synonyms:	Sister of mammalian grainyhead, Transcription factor CP2-like 4, TFCP2L4



[View online »](#)

Note: **Molecular Weight:** 70345 Da

Product images:



Western blot analysis of GRHL3 / SOM Antibody (N-term) in human placenta tissue lysates (35ug/lane). This demonstrates the GRHL3 antibody detected the GRHL3 protein (arrow).