

Product datasheet for **AP51948PU-N**

Grainyhead like protein 1 homolog (GRHL1) (Center) Rabbit Polyclonal Antibody

Product data:

Product Type:	Primary Antibodies
Applications:	WB
Recommended Dilution:	ELISA: 1/1000. Western Blot: 1/100-1/500.
Reactivity:	Human
Host:	Rabbit
Isotype:	Ig
Clonality:	Polyclonal
Immunogen:	KLH conjugated synthetic peptide between 293-322 amino acids from the Central region of Human GRHL1 / LBP32.
Specificity:	This antibody recognizes Human GRHL1 / LBP32 (Center).
Formulation:	PBS containing 0.09% (W/V) Sodium Azide as preservative State: Aff - Purified State: Liquid purified Ig fraction
Concentration:	lot specific
Purification:	Protein A column, followed by peptide affinity purification
Conjugation:	Unconjugated
Storage:	Store undiluted at 2-8°C for one month or (in aliquots) at -20°C for longer. Avoid repeated freezing and thawing.
Stability:	Shelf life: one year from despatch.
Gene Name:	grainyhead like transcription factor 1
Database Link:	Entrez Gene 29841 Human Q9NZI5
Background:	GRHL1 is a transcription factor. Isoform 1 may function as an activator and isoform 2 as a repressor in tissues where both forms are expressed. May play a role in development. May be involved in epidermal differentiation (By similarity). Binds and transactivates the EN1 promoter.



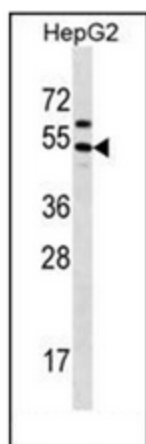
[View online »](#)

Synonyms: Transcription factor CP2-like 2, Transcription factor LBP-32, NH32, Mammalian grainyhead, MGR, TFCP2L2

Note: **Molecular Weight:** 49kd Isoform 2. 70113 Da

Protein Families: Transcription Factors, Transmembrane

Product images:



Western blot analysis of GRHL1 Antibody (Center) in HepG2 cell line lysates (35ug/lane). This demonstrates the GRHL1 antibody detected the GRHL1 protein (arrow).