

Product datasheet for **AP51947PU-N**

Gremlin 1 (GREM1) (C-term) Rabbit Polyclonal Antibody

Product data:

Product Type:	Primary Antibodies
Applications:	WB
Recommended Dilution:	ELISA: 1/1000. Western Blot: 1/100-1/500.
Reactivity:	Human
Host:	Rabbit
Isotype:	Ig
Clonality:	Polyclonal
Immunogen:	KLH conjugated synthetic peptide between 110-139 amino acids from the C-terminal region of Human Gremlin-1 / GREM1
Specificity:	This antibody recognizes Human Gremlin-1 / GREM1 (C-term).
Formulation:	PBS containing 0.09% (W/V) Sodium Azide as preservative State: Aff - Purified State: Liquid purified Ig fraction
Concentration:	lot specific
Purification:	Protein A column, followed by peptide affinity purification
Conjugation:	Unconjugated
Storage:	Store undiluted at 2-8°C for one month or (in aliquots) at -20°C for longer. Avoid repeated freezing and thawing.
Stability:	Shelf life: one year from despatch.
Gene Name:	gremlin 1, DAN family BMP antagonist
Database Link:	Entrez Gene 26585 Human O60565



[View online »](#)

Background:

This gene encodes a member of the BMP (bone morphogenetic protein) antagonist family. Like BMPs, BMP antagonists contain cystine knots and typically form homo- and heterodimers. The CAN (cerberus and dan) subfamily of BMP antagonists, to which this gene belongs, is characterized by a C-terminal cystine knot with an eight-membered ring. The antagonistic effect of the secreted glycosylated protein encoded by this gene is likely due to its direct binding to BMP proteins. As an antagonist of BMP, this gene may play a role in regulating organogenesis, body patterning, and tissue differentiation. In mouse, this protein has been shown to relay the sonic hedgehog (SHH) signal from the polarizing region to the apical ectodermal ridge during limb bud outgrowth. Alternatively spliced transcript variants encoding different isoforms have been found for this gene.

Synonyms:

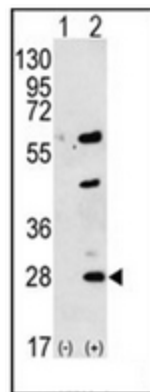
DAND2, CKTSF1B1, DRM, PIG2, IHG-2, GREM-1

Note:

Molecular Weight: 20697 Da

Protein Families:

ES Cell Differentiation/IPS, Secreted Protein

Product images:

Western blot analysis of GREM1 (arrow) using Gremlin-1 / GREM1 Antibody (C-term). 293 cell lysates (2 ug/lane) either nontransfected (Lane 1) or transiently transfected (Lane 2) with the GREM1 gene.