

## Product datasheet for **AP51946PU-N**

### GREB1 (Center) Rabbit Polyclonal Antibody

#### Product data:

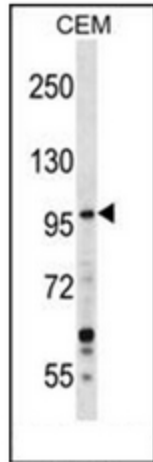
Product Type:	Primary Antibodies
Applications:	WB
Recommended Dilution:	<b>ELISA:</b> 1/1000. <b>Western Blot:</b> 1/100-1/500.
Reactivity:	Human, Mouse
Host:	Rabbit
Isotype:	Ig
Clonality:	Polyclonal
Immunogen:	KLH conjugated synthetic peptide between 1416-1446 amino acids from the Central region of Human GREB1
Specificity:	This antibody recognizes Human and Mouse GREB1 (Center).
Formulation:	PBS containing 0.09% (W/V) Sodium Azide as preservative State: Aff - Purified State: Liquid purified Ig fraction
Concentration:	lot specific
Purification:	Protein A column, followed by peptide affinity purification
Conjugation:	Unconjugated
Storage:	Store undiluted at 2-8°C for one month or (in aliquots) at -20°C for longer. Avoid repeated freezing and thawing.
Stability:	Shelf life: one year from despatch.
Gene Name:	growth regulation by estrogen in breast cancer 1
Database Link:	<a href="#">Entrez Gene 268527 Mouse</a> <a href="#">Entrez Gene 9687 Human</a> <a href="#">Q4ZG55</a>
Background:	This gene is an estrogen-responsive gene that is an early response gene in the estrogen receptor-regulated pathway. It is thought to play an important role in hormone-responsive tissues and cancer. Three alternatively spliced transcript variants encoding distinct isoforms have been found for this gene. [provided by RefSeq].
Synonyms:	KIAA0575



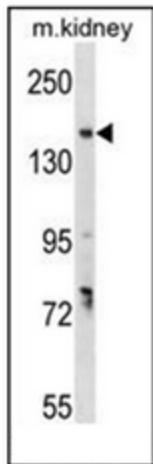
[View online »](#)

Note: **Molecular Weight:** 216467 Da (107kDa Isoform 4)

### Product images:



Western blot analysis of GREB1 Antibody in CEM cell line lysates (35ug/lane). This demonstrates the GREB1 antibody detected the GREB1 protein (arrow).



Western blot analysis of GREB1 Antibody in mouse kidney tissue lysates (35ug/lane). This demonstrates the GREB1 antibody detected the GREB1 protein (arrow).