

## Product datasheet for **AP51945PU-N**

### GRB7 (Center) Rabbit Polyclonal Antibody

#### Product data:

Product Type:	Primary Antibodies
Applications:	WB
Recommended Dilution:	<b>Western Blot:</b> 1/1000.
Reactivity:	Human, Mouse
Host:	Rabbit
Isotype:	Ig
Clonality:	Polyclonal
Immunogen:	KLH conjugated synthetic peptide between 289~318 amino acids from the Central region of human GRB7.
Specificity:	This antibody recognizes Human and Mouse GRB7 (Center).
Formulation:	PBS containing 0.09% (W/V) Sodium Azide as preservative State: Aff - Purified State: Liquid purified Ig fraction
Concentration:	lot specific
Purification:	Protein A column, followed by peptide affinity purification
Conjugation:	Unconjugated
Storage:	Store undiluted at 2-8°C for one month or (in aliquots) at -20°C for longer. Avoid repeated freezing and thawing.
Stability:	Shelf life: one year from despatch.
Gene Name:	growth factor receptor bound protein 7
Database Link:	<a href="#">Entrez Gene 14786 Mouse</a> <a href="#">Entrez Gene 2886 Human</a> <a href="#">Q14451</a>
Background:	GRB7 belongs to a small family of adapter proteins that are known to interact with a number of receptor tyrosine kinases and signaling molecules. This gene encodes a growth factor receptor-binding protein that interacts with epidermal growth factor receptor (EGFR) and ephrin receptors. The protein plays a role in the integrin signaling pathway and cell migration by binding with focal adhesion kinase (FAK).
Synonyms:	GRB-7

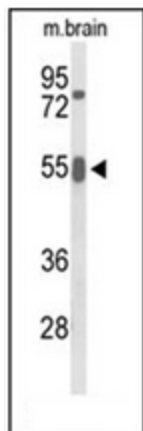


[View online »](#)

Note: **Molecular Weight:** 59681 Da

Protein Families: Druggable Genome, Embryonic stem cells, Stem cell - Pluripotency

**Product images:**



Western blot analysis of GRB7 Antibody (Center) in mouse brain tissue lysates (35ug/lane). GRB7 (arrow) was detected using the purified Pab.