

Product datasheet for **AP51943PU-N**

GRAP2 (Center) Rabbit Polyclonal Antibody

Product data:

| | |
|-----------------------|--|
| Product Type: | Primary Antibodies |
| Applications: | WB |
| Recommended Dilution: | ELISA: 1/1000. Western Blot: 1/100-1/500. |
| Reactivity: | Human |
| Host: | Rabbit |
| Isotype: | Ig |
| Clonality: | Polyclonal |
| Immunogen: | KLH conjugated synthetic peptide between 130-159 amino acids from the Central region of Human GRAP2 |
| Specificity: | This antibody recognizes Human GRAP2 (Center). |
| Formulation: | PBS containing 0.09% (W/V) Sodium Azide as preservative State: Aff - Purified State: Liquid purified Ig fraction |
| Concentration: | lot specific |
| Purification: | Protein A column, followed by peptide affinity purification |
| Conjugation: | Unconjugated |
| Storage: | Store undiluted at 2-8°C for one month or (in aliquots) at -20°C for longer. Avoid repeated freezing and thawing. |
| Stability: | Shelf life: one year from despatch. |
| Gene Name: | GRB2-related adaptor protein 2 |
| Database Link: | Entrez Gene 9402 Human O75791 |



[View online »](#)

Background: This gene encodes a member of the GRB2/Sem5/Drk family. This member is an adaptor-like protein involved in leukocyte-specific protein-tyrosine kinase signaling. Like its related family member, GRB2-related adaptor protein (GRAP), this protein contains an SH2 domain flanked by two SH3 domains. This protein interacts with other proteins, such as GRB2-associated binding protein 1 (GAB1) and the SLP-76 leukocyte protein (LCP2), through its SH3 domains. Transcript variants utilizing alternative polyA sites exist.

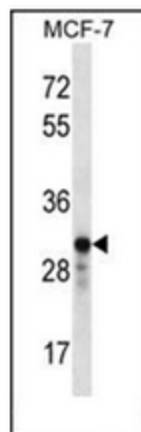
Synonyms: GADS, GRBLG, GRB2L, Grf-40, GRBX, GRID

Note: **Molecular Weight:** 37909 Da

Protein Families: Druggable Genome

Protein Pathways: T cell receptor signaling pathway

Product images:



Western blot analysis of GRAP2 Antibody (Center) in MCF-7 cell line lysates (35ug/lane). This demonstrates the GRAP2 antibody detected the GRAP2 protein (arrow).