

Product datasheet for **AP51941PU-N**

GPX8 (C-term) Rabbit Polyclonal Antibody

Product data:

Product Type:	Primary Antibodies
Applications:	WB
Recommended Dilution:	ELISA: 1/1000. Western Blot: 1/100-1/500.
Reactivity:	Human
Host:	Rabbit
Isotype:	Ig
Clonality:	Polyclonal
Immunogen:	KLH conjugated synthetic peptide between 163-192 amino acids from the C-terminal region of human GPX8
Specificity:	This antibody recognizes Human GPX8 (C-term).
Formulation:	PBS containing 0.09% (W/V) Sodium Azide as preservative State: Aff - Purified State: Liquid purified Ig fraction
Concentration:	lot specific
Purification:	Protein A column, followed by peptide affinity purification
Conjugation:	Unconjugated
Storage:	Store undiluted at 2-8°C for one month or (in aliquots) at -20°C for longer. Avoid repeated freezing and thawing.
Stability:	Shelf life: one year from despatch.
Gene Name:	glutathione peroxidase 8 (putative)
Database Link:	Entrez Gene 493869 Human Q8TED1
Background:	GPX8 belongs to the glutathione peroxidase family. Glutathione peroxidase is an enzyme whose principal function is to protect against damage from endogenously-formed hydroxyperoxides, catalysing the reduction of hydroxyperoxides by glutathione. Several forms of the enzyme are known. It has a catalytic activity of $2 \text{ glutathione} + \text{H}_2\text{O}_2 = \text{glutathione disulfide} + 2 \text{H}_2\text{O}$.



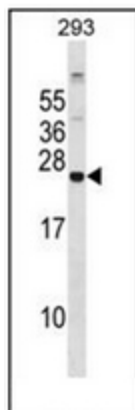
[View online »](#)

Synonyms: EPLA847; GPx-8; GSHPx-8; UNQ847

Note: **Molecular Weight:** 23881 Da

Protein Families: Transmembrane

Product images:



Western blot analysis of GPX8 Antibody (C-term) in 293 cell line lysates (35ug/lane). This demonstrates the GPX8 antibody detected the GPX8 protein (arrow).