

Product datasheet for **AP51937PU-N**

Glutathione Peroxidase 1 (GPX1) (C-term) Rabbit Polyclonal Antibody

Product data:

Product Type:	Primary Antibodies
Applications:	FC, IF, IHC, WB
Recommended Dilution:	Enzyme immunoassay: 1/1000. Flow cytometry: 1/10-1/50. Immunofluorescence: 1/10-1/50. Immunohistochemistry on Paraffin sections: 1/10-1/50. Western blot: 1/1000.
Reactivity:	Human, Mouse
Host:	Rabbit
Isotype:	Ig
Clonality:	Polyclonal
Immunogen:	Synthetic peptide - KLH conjugated - corresponding to the C-terminal region (between 164-193aa) of human Glutathione peroxidase 1 / GPX1.
Specificity:	This antibody recognizes Glutathione peroxidase 1 / GPX1.
Formulation:	PBS with 0.09% (W/V) Sodium azide State: Aff - Purified State: Liquid purified Ig fraction
Concentration:	lot specific
Purification:	Purified through a Protein A column followed by peptide affinity purification
Conjugation:	Unconjugated
Storage:	Store undiluted at 2-8°C for one month or (in aliquots) at -20°C for longer. Avoid repeated freezing and thawing.
Stability:	Shelf life: one year from despatch.
Gene Name:	glutathione peroxidase 1
Database Link:	Entrez Gene 14775 Mouse Entrez Gene 2876 Human P07203



[View online »](#)

Background: GPX1 encodes a member of the glutathione peroxidase family: Glutathione peroxidase 1. Glutathione peroxidase functions in the detoxification of hydrogen peroxide, and is one of the most important antioxidant enzymes in humans. This protein is one of only a few proteins known in higher vertebrates to contain selenocysteine, which occurs at the active site of glutathione peroxidase and is coded by UGA, that normally functions as a translation termination codon. In addition, this protein is characterized in a polyalanine sequence polymorphism in the N-terminal region, which includes three alleles with five, six or seven alanine (ALA) repeats in this sequence.

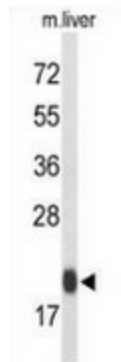
Synonyms: GSHPx-1, Cellular glutathione peroxidase

Note: **Molecular Weight:** 21946 Da

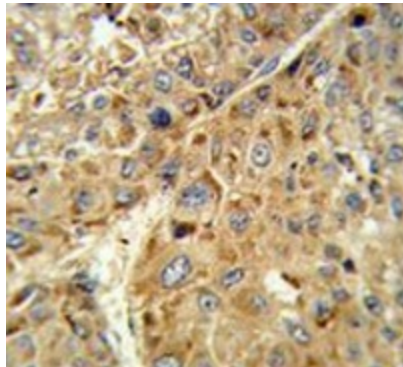
Protein Families: Druggable Genome

Protein Pathways: Amyotrophic lateral sclerosis (ALS), Arachidonic acid metabolism, Glutathione metabolism, Huntington's disease

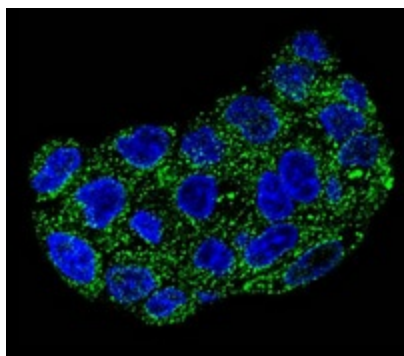
Product images:



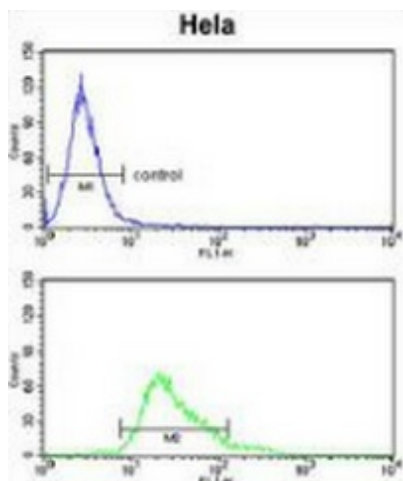
Western blot analysis of Glutathione peroxidase 1 / GPX1 (arrow) in mouse liver tissue lysates (35ug/lane) using Glutathione peroxidase 1 / GPX1 antibody. (C-term).



Immunohistochemistry analysis of human hepatocarcinoma tissue (Formalin-fixed, Paraffin-embedded) using Glutathione peroxidase 1 / GPX1 antibody. (C-term), followed by peroxidase-conjugated secondary antibody and DAB staining. This data demonstrates the use of this antibody for IHC; clinical relevance has not been evaluated.



Confocal immunofluorescent analysis of GPX1 in HepG2 cells using Glutathione peroxidase 1 / GPX1 antibody. (C-term), followed by Alexa Fluor 488-conjugated goat anti-rabbit IgG (green). DAPI was used to stain the cell nuclear (blue).



Flow cytometry analysis of HeLa cells (bottom histogram) compared to a negative control cell (top histogram) using Glutathione peroxidase 1 / GPX1 antibody. (C-term), followed by FITC-conjugated goat-anti-rabbit secondary antibodies.