

## Product datasheet for **AP51934PU-N**

### CSN1 (GPS1) (Center) Rabbit Polyclonal Antibody

#### Product data:

Product Type:	Primary Antibodies
Applications:	WB
Recommended Dilution:	<b>ELISA:</b> 1/1000. <b>Western Blot:</b> 1/100-1/500.
Reactivity:	Human, Mouse
Host:	Rabbit
Isotype:	Ig
Clonality:	Polyclonal
Immunogen:	KLH conjugated synthetic peptide between 184-214 amino acids from the Central region of Human GPS1
Specificity:	This antibody recognizes Mouse GPS1 / COPS / CSN1 Antibody (Center).
Formulation:	PBS containing 0.09% (W/V) Sodium Azide as preservative State: Aff - Purified State: Liquid purified Ig fraction
Concentration:	lot specific
Purification:	Protein A column, followed by peptide affinity purification
Conjugation:	Unconjugated
Storage:	Store undiluted at 2-8°C for one month or (in aliquots) at -20°C for longer. Avoid repeated freezing and thawing.
Stability:	Shelf life: one year from despatch.
Gene Name:	G protein pathway suppressor 1
Database Link:	<a href="#">Entrez Gene 209318 Mouse</a> <a href="#">Entrez Gene 2873 Human</a> <a href="#">Q13098</a>
Background:	This gene is known to suppress G-protein and mitogen-activated signal transduction in mammalian cells. The encoded protein shares significant similarity with Arabidopsis FUS6, which is a regulator of light-mediated signal transduction in plant cells. Two alternatively spliced transcript variants encoding different isoforms have been found for this gene. [provided by RefSeq].



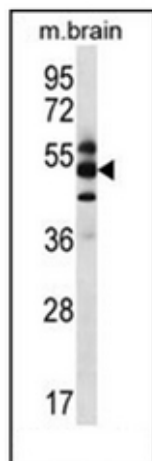
[View online »](#)

Synonyms: Signalosome subunit 1, SGN1

Note: **Molecular Weight:** 55537 Da

Protein Families: Druggable Genome

### Product images:



Western blot analysis of GPS1 / COPS / CSN1 Antibody (Center) in mouse brain tissue lysates (35ug/lane). This demonstrates the GPS1 antibody detected the GPS1 protein (arrow).