

Product datasheet for **AP51933PU-N**

GPRC5B (C-term) Rabbit Polyclonal Antibody

Product data:

Product Type:	Primary Antibodies
Applications:	WB
Recommended Dilution:	ELISA: 1/1000. Western Blot: 1/1000.
Reactivity:	Human
Host:	Rabbit
Isotype:	Ig
Clonality:	Polyclonal
Immunogen:	KLH conjugated synthetic peptide between 292-321 amino acids from the C-terminal region of human GPRC5B
Specificity:	This antibody recognizes Human GPRC5B (C-term).
Formulation:	PBS containing 0.09% (W/V) Sodium Azide as preservative State: Aff - Purified State: Liquid purified Ig fraction
Concentration:	lot specific
Purification:	Protein A column, followed by peptide affinity purification
Conjugation:	Unconjugated
Storage:	Store undiluted at 2-8°C for one month or (in aliquots) at -20°C for longer. Avoid repeated freezing and thawing.
Stability:	Shelf life: one year from despatch.
Gene Name:	G protein-coupled receptor class C group 5 member B
Database Link:	Entrez Gene 51704 Human Q9NZH0
Background:	GPRC5B is a member of the type 3 G protein-coupled receptor family. Members of this superfamily are characterized by a signature 7-transmembrane domain motif. The specific function of this protein is unknown; however, this protein may mediate the cellular effects of retinoic acid on the G protein signal transduction cascade.



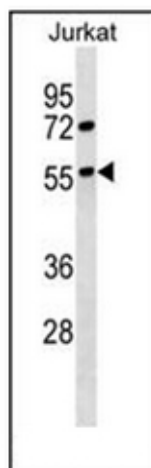
[View online »](#)

Synonyms: G-protein coupled receptor family C group 5 member B, Retinoic acid-induced gene 2 protein, A-69G12.1

Note: **Molecular Weight:** 44795 Da

Protein Families: Druggable Genome

Product images:



Western blot analysis of GPRC5B / RAIG2 Antibody (C-term) in Jurkat cell line lysates (35ug/lane). This demonstrates the GPRC5B antibody detected the GPRC5B protein (arrow).